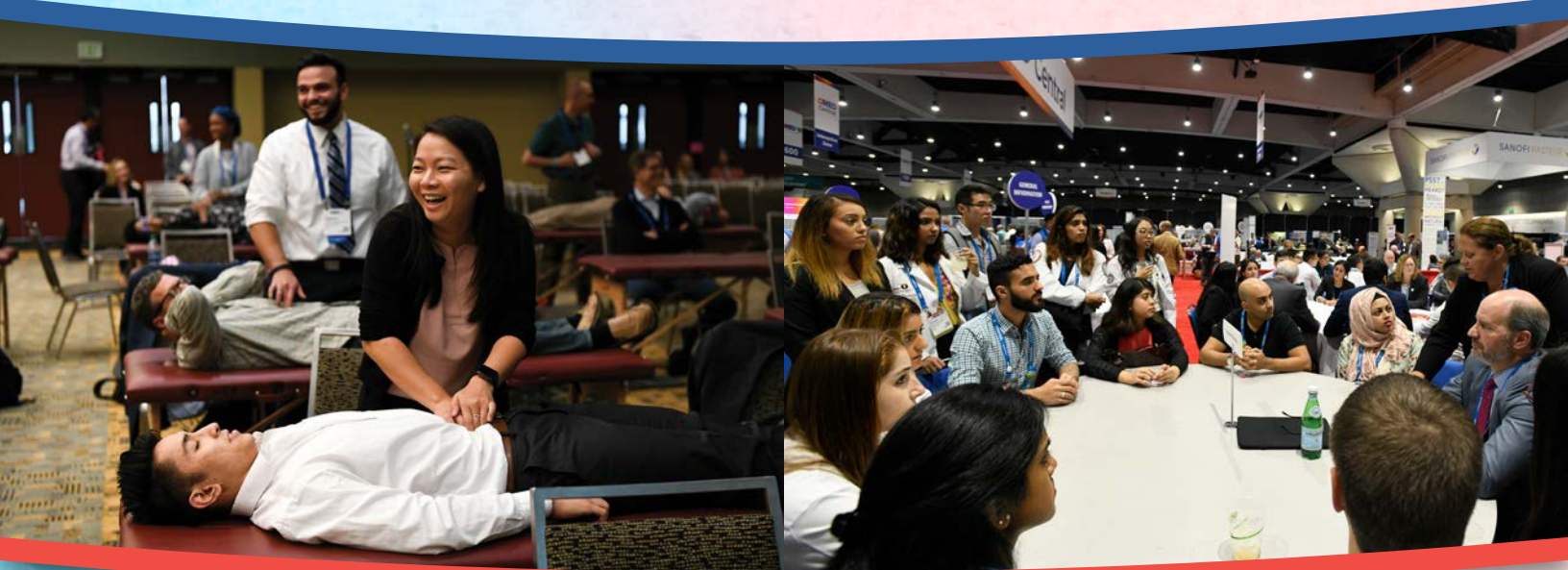


MED[®]22

#DOProud Experience the Distinction

Oct. 27-30 | Boston, MA | Hybrid

» **Digital Program** «



AMERICAN
OSTEOPATHIC
ASSOCIATION

Table of Contents

Invitation	Page 3
OMED Registration	Page 5
OMED Housing Information	Page 6-7
Continuing Medical Education (CME) Information	Page 9
OMED22 Schedule of Events	Page 10-12
Keynote Sessions	Page 14-16
OMED22 Specialty College Participation	Page 18
Program Descriptions.	Page 20-24
In-Person and Virtual Schedule	Page 25-75
Research Poster Presentations and Schedule	Page 77-87
Symposia	Page 90-92
Product Theaters	Page 93
Product Forums	Page 94
Exhibits	Page 96
Sponsor Acknowledgement	Page 98
Networking Events	Page 101-102
Alumni Events.	Page 104-105
Ancillary Meetings.	Page 107-113



#DOProud Experience the Distinction

Oct. 27-30 | Boston, MA | Hybrid

Register Today! Come together to experience the distinctiveness of osteopathic education!

I am delighted to be meeting in-person – and virtually – for OMED 2022! This year's hybrid conference has more content than ever before and offers flexible opportunities to participate.

The Osteopathic Medical Education Conference (OMED) is the American Osteopathic Association's (AOA) premier educational event. Presented annually, it is a conference that showcases osteopathic medicine across multiple specialties and is planned in conjunction with AOA specialty college affiliates. It brings together the osteopathic community and provides an opportunity for attendees to obtain high quality education, discuss clinical science, and network with one another. In addition, this important event affords the AOA the opportunity to continue to strengthen its relationship and partnership with osteopathic affiliated organizations, including colleges of osteopathic medicine.

OMED is an important national event and an osteopathic tradition that highlights osteopathic medicine as part of today's healthcare challenges. Attend in-person or virtually to connect with your colleagues by participating in a myriad of social/networking events as well as educational tracks. Whether you are a seasoned professional, a new physician in practice, or an osteopathic student or resident, OMED has something for everyone.

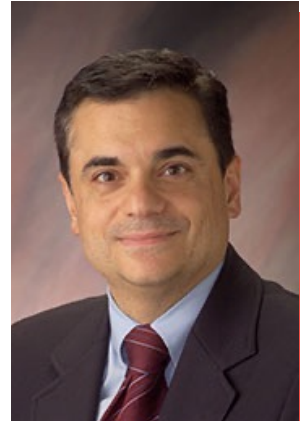
Follow the links in this digital program to check out the OMED 2022 schedule. Here you can also link to all your registration needs. Also, be sure to check back often as the digital program is continually updated as more activities are confirmed and added.

As a member of the profession, don't miss this opportunity to participate in engaging learning experiences presented by inspirational and thought-provoking speakers. In-person attendees also receive access to the virtual platform, so don't worry about missing a thing! All of the content presented in-person will also be available on the virtual platform, so attendees can partake in OMED from the comfort of their home or office, or come to Boston and upon returning, spend 60 days post-conference partaking in virtual educational sessions that you weren't able to attend in-person. Hybrid OMED 2022 provides opportunities for you to obtain high quality CME across 18 medical specialties to help you keep pace with your specialty and today's rapidly changing healthcare environment.

Looking forward to seeing you in Boston!



Ross Zafonte, DO
OMED 2022 Program Chair



American
Osteopathic
Foundation

2022 AMERICAN OSTEOPATHIC FOUNDATION

HONORS *Gala*

THANK YOU

TO OUR 2022 GALA SPONSORS

PLATINUM SPONSOR



Edward Via College of
Osteopathic Medicine

VIRGINIA • CAROLINAS
AUBURN • LOUISIANA

GOLD SPONSORS



The Heatherington Foundation
for Innovation and Education in Health Care



LMU

DeBusk College of Osteopathic Medicine
LINCOLN MEMORIAL UNIVERSITY



ENTERTAINMENT SPONSOR

Jeffrey S. Grove
DO, FACOFP (DIST.)

2022 HONORS GALA
Friday, October 28, 2022
Boston Sheraton

Ticket and auction information available at <https://aof.org/giving/honors-gala>
for more information email Honors@AOF.org

OMED Registration

The registration conference rates for both in-person participation or virtual participation are outlined below.

Category	Cost
Members	\$949
Non-Members	\$1,149
Residents	\$0
Students	\$0
Military	\$649
Retired	\$300
Allied Health Professional (RN, NP, PA, etc.)	\$449
Associate Member/Practice Manager	\$300
Affiliate Executive Directors/CEOs	\$0
Guests	\$150



OMED²²
#DOProud Experience the Distinction
Oct. 27-30 | Boston, MA | Hybrid

Access 200+ hours of virtual programming!

[Register now](#)

omed.osteopathic.org



[Return to Top](#)

OMED Housing Information

The official housing provider for the AOA OMED conference is Maritz. The AOA OMED conference does not have influence over or responsibility for any reservations made through a housing company or group other than the AOA OMED conference official housing partner, Maritz. In recent years, a number of attendees have informed the AOA OMED conference of housing solicitations (often fraudulent) from groups with no affiliation with the AOA OMED conference. It is encouraged to book hotel reservations through the AOA OMED conference provider, Maritz, and avoid providing information to any other company, even if they claim to be affiliated with the event.

Advantages of Booking within the AOA OMED Conference Hotel Room Block:

- **Location:** All of our hotels are located within a few minute walk of the convention center
- **Deep Discounts:** Buy-in-bulk rates, with savings passed on to you.
- **Best Rate Package:** We comparison shop to ensure our rates remain the lowest.
- **Hotel Reward Points:** Add to your hotel loyalty program.
- **Support the Industry:** Our group buying allows us to keep convention costs down and pass savings along to you with low registration rates.

All reservations can be made online through Maritz when completing your in-person registration.

Hotel	OMED Rates
Sheraton Boston (Headquarter Hotel) 39 Dalton Street, Boston, MA <i>Connected to the convention center</i>	\$315 per night plus tax
Marriott Copley Place 110 Huntington Avenue, Boston, MA <i>1 block from the convention center</i>	\$477 per night plus tax
Westin Copley Place 10 Huntington Avenue, Boston, MA <i>2 blocks from the convention center</i>	\$359 per night plus tax

[Go Here to Register
and Book Housing](#)

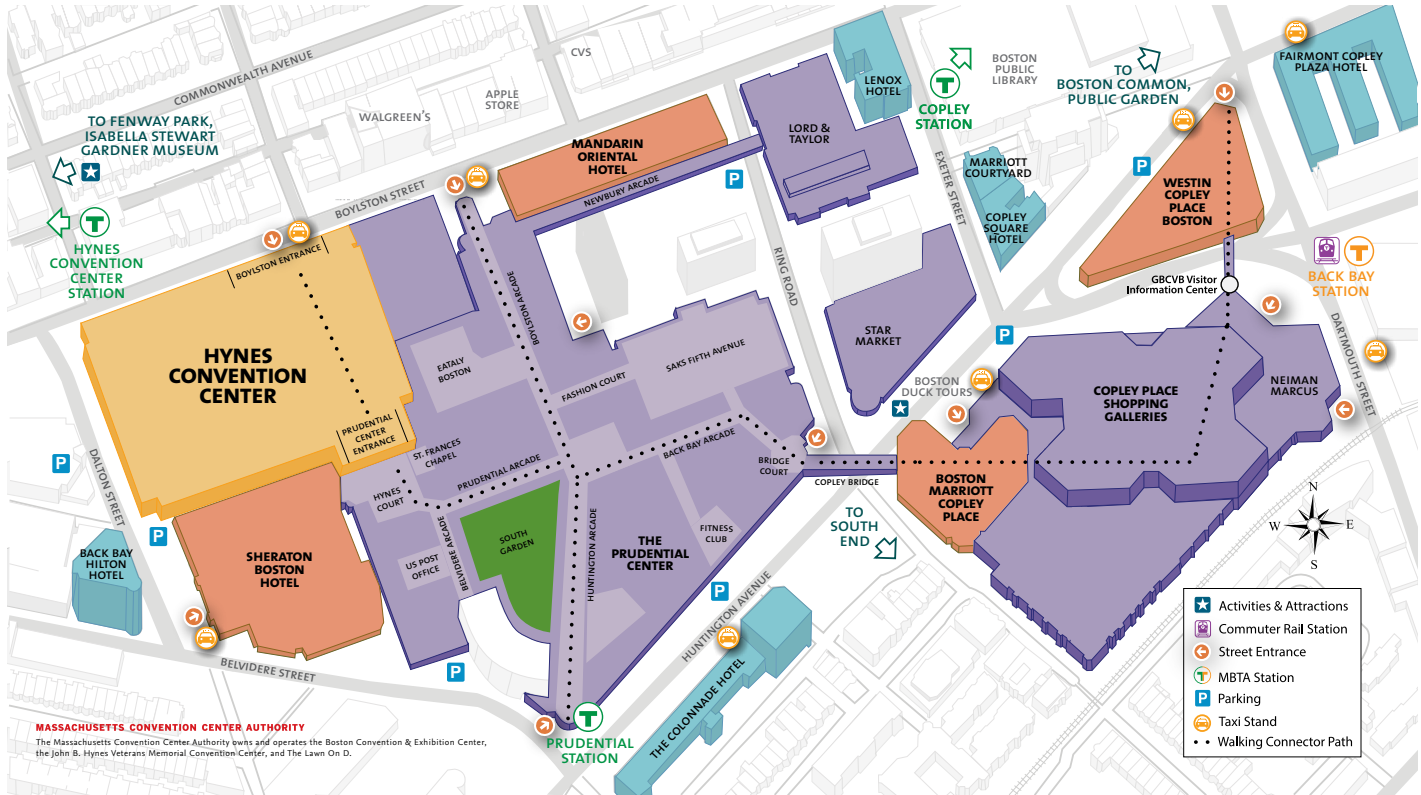
[Return to Top](#)

OMED Housing Information



HYNES CONVENTION CENTER
900 Boylston Street | Boston, Massachusetts 02115
T 877-393-3393 | F 617-954-3326 | SignatureBoston.com

Hynes Complex



[Return to Top](#)



DIGITAL HEALTH GOT YOU SPOOKED?

Come Face Your Fears at the AOIA Innovation Track

Session Includes:

- Overview of Digital Medicine
- Considerations for Safe, Effective, and Equitable Deployment
- Implementation of Digital Innovation at Osteopathic Institutions
- Case Study on Using Data Intelligence to Inform Value Based Care Delivery
- Fireside Chat with our Digital Health Experts

Saturday, October 29

Room 207, Hynes Convention Center

1:30 – 4:30pm EDT | Reception Immediately Following

Continuing Medical Education (CME) Information

OMED22 is supported by independent educational grants from commercial interests. Complete information will be provided to participants prior to the activity. Conflict of Interest Disclosures for individuals in control of content will be provided prior to the start of the activity.

Overall Education Objectives

- Highlight the evidence on new, revised, and standard treatment approaches for a variety of medical conditions as they relate to physicians
- Review revisions in clinical practice guidelines and evaluate clinical practice implications
- Describe updates in clinical decision tools for screening and differential diagnoses of diseases

Designation

The American Osteopathic Association (AOA) designates this program for a maximum of 40 AOA Category 1-A credits* and 20 AOA Category 1-B credits and will report CME credits commensurate with the physician's participation in this program. The AOA designates this internet activity for *60 AMA PRA Category 1 Credits™*.*

Physicians should only claim the credit commensurate with the extent of their participation in the activity.

*In-person attendees are eligible for a maximum of 60 AOA Category 1 Credits (40 1-A, 20 1-B) or 60 AMA PRA Category 1 Credits™

Virtual attendees are eligible for a maximum of 50 AOA Category 1 Credits (30 1-A, 20 1-B) or 50 AMA PRA Category 1 Credits™

Claim 2 AOA Category 2-B CME Credits by Viewing ePosters

Participants may claim up to two (2) credits of AOA Category 2-B CME by [viewing the ePosters here](#).

To claim this credit and receive a certificate, the participant must complete and submit a separate attestation form to gdillard@osteopathic.org. The AOA will email a certificate that includes the number of AOA Category 2-B CME credits earned once the attestation form is received and hours verified.

The American Osteopathic Association (AOA) is accredited by the Accreditation Council for Continuing Medical Education (ACCME) to provide continuing medical education for physicians.



CME/Certificate of Attendance

To claim your CME certificate or your certificate of attendance, you will need to complete an evaluation and CME credit hour attestation by January 31, 2023.

Disclaimer

The information in this educational activity is provided for general medical education purposes only and is not meant to substitute for the independent medical judgment of a physician relative to diagnostic and treatment options of a specific patient's medical condition. The viewpoints expressed in this CME activity are those of the authors/faculty. They do not represent an endorsement by the AOA. In no event will the AOA be liable for any decision made or action taken in reliance upon the information provided through this CME activity.

[Return to Top](#)

OMED22 Schedule of Events

OMED 2022 will bring together osteopathic physicians and the healthcare team for one event this October 27-30. Participate in OMED either in-person (Boston, MA) or virtually. Earn up to 40 hours of Category 1-A CME and 20 hours of Category 1-B.

Registration is open now until December 23. Registration rates start at \$949. Take a look at the schedule of events to Save the Date and plan ahead! All times listed are Eastern Daylight Savings Time.

Thursday, October 27

Virtual Schedule

TIME	EVENT
8:00am-12:00pm	Pre-Conference/CME Didactic Sessions
1:00pm-5:00pm	CME (Didactic) Sessions

In-Person Schedule

All meetings take place at the Hynes Convention Center unless otherwise noted.

TIME	EVENT
8:00am-12:00pm	Pre-Conference/CME Didactic Sessions
9:00am-2:00pm	AOA BOT Meeting (Sheraton)
12:00pm-1:30pm	Symposium (Sheraton - Grand Ballroom)
1:00pm-5:00pm	CME (Didactic) Sessions
6:00pm-8:00pm	OMED Welcome Reception (Sheraton - Grand Ballroom)

Friday, October 28

Virtual Schedule

TIME	EVENT
7:45am-9:00am	General Session (Keynote Speaker)
9:30am-12:30pm	CME (Didactic) Sessions
1:30pm-5:00pm	CME (Didactic) Sessions

Friday, October 28

In-Person Schedule

All meetings take place at the Hynes Convention Center unless otherwise noted.

TIME	EVENT
6:00am-7:30am	Symposium (Sheraton - Grand Ballroom)
7:45am-9:00am	General Session (Keynote Speaker)
9:15am-9:30am	Exhibit Hall Ribbon Cutting
9:15am-3:00pm	Exhibits Open

[Return to Top](#)

OMED22 Schedule of Events

Friday, October 28

In-Person Schedule (Continued)

All meetings take place at the Hynes Convention Center unless otherwise noted.

TIME	EVENT
9:30am-12:30pm	CME (Didactic) Sessions
12:10pm-12:55pm	Product Theaters (Exhibit Hall)
12:30pm-1:00pm	Product Forums (Exhibit Hall)
1:30pm-5:00pm	CME (Didactic) Sessions
6:00pm-11:30pm	AOF Gala (Separate Registration Required)

Saturday, October 29

Virtual Schedule

TIME	EVENT
7:45am-9:15am	General Session & Awards (Keynote Speaker)
9:30am-12:30pm	CME (Didactic) Sessions
1:30pm-5:00pm	CME (Didactic) Sessions

Saturday, October 29

In-Person Schedule

All meetings take place at the Hynes Convention Center unless otherwise noted.

TIME	EVENT
6:00am-7:30am	Symposium (Sheraton - Grand Ballroom)
7:45am-9:15am	General Session & Awards (Keynote Speaker)
9:15am-3:00pm	Exhibits Open
9:30am-12:30pm	CME (Didactic) Sessions
9:30am-12:30pm	Resident Track
9:30am-12:30pm	Student Track
12:30pm-1:30pm	Exhibit Hall
12:30pm-1:30pm	Product Theaters (Exhibit Hall)
12:15pm-12:45pm	Product Forums (Exhibit Hall)
1:30pm-5:00pm	CME (Didactic) Sessions
1:30pm-4:30pm	Resident Track
1:30pm-4:30pm	Student Track
5:00pm-6:00pm	Open Mic Event/Networking Event
6:30pm	Alumni Events and State Affiliate Events

[Return to Top](#)

OMED22 Schedule of Events

Sunday, October 30

Virtual Schedule

TIME	EVENT
8:00am-8:45am	General Session (Keynote Speaker)
9:00am-12:00pm	CME (Didactic) Sessions

Sunday, October 30

In-Person Schedule

All meetings take place at the Hynes Convention Center unless otherwise noted.

TIME	EVENT
6:15am-7:45am	Advocates for the AOA A.T. Still Fit for Life Fun Run (Off Premise)
8:00am-8:45am	General Session (Keynote Speaker)
9:00am-12:00pm	CME (Didactic) Sessions
9:00am-12:00pm	Student Track
12:00pm	In-Person Conference Concludes

Sunday, October 30 - Saturday, December 31

Access the in-person CME (Didactic) content through the virtual platform.

[Return to Top](#)

MEDICARE ADVOCACY ALERT

TAKE ACTION NOW!

Tell Congress to address the looming cuts to Medicare payment before the end of 2022!

Starting January 1, 2023, physician payment will be cut nearly 10% under the Medicare program if Congress does not act. These devastating cuts come at a time when physicians are still grappling with financial challenges brought on by the COVID-19 pandemic, and increasing overhead costs for independent practices. Physicians deserve better, which is why we need your help to reach out to your members of Congress to ensure patients continue to have access to high-value care.

Take immediate action today: click or scan the QR code to the right using your mobile device. You will be directed to the Osteopathic Advocacy Network (OAN) Advocacy Action Center where you can urge your members of Congress to avert these debilitating payment cuts to physicians.



For more information, contact:
Sean Neal at sneal@osteopathic.org



Please take action on this issue today!

Visit the AOA Member Value Kiosk

Plaza Level Hallway (near the big OMED letters)



[Osteopathic.org/career](https://osteopathic.org/career)

Online, searchable job board with over 14,000 DO jobs



[Osteopathic.org/store](https://osteopathic.org/store)

View and Buy our new products:

- New "What is a DO?" and "OMT" brochure
- #DOProud and AOA logo wear



[Osteopathic.org/membervalue](https://osteopathic.org/membervalue)

Discounts on personal and professional services



[Osteopathic.org/insurance](https://osteopathic.org/insurance)

Protect your personal and professional assets



Enter the daily drawing for a VISA gift card

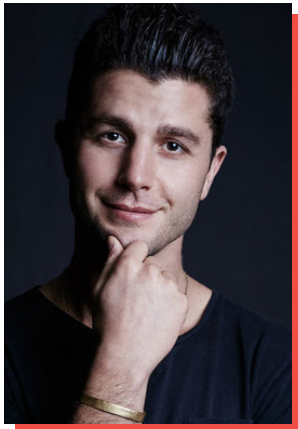
Attending Virtually? Email membervalue@osteopathic.org to enter

Main Stage: Keynote Sessions

These daily Main Stage sessions are not to be missed. Friday and Saturday the General Sessions will begin at 7:45am EDT and Sunday at 8:00am EDT.

FRIDAY MAIN STAGE HIGHLIGHTS

Keynote – Featuring Ben Nemtin Friday, October 28 | 8:00am EDT



Resilience in the Face of Uncertainty

An organization can only become the best version of itself to the extent that its employees are becoming better versions of themselves. Proving that you care enough to ask your people what matters most to them goes a long way, and it's easier than you think to help them get there. Mr. Nemtin highlights the importance of pursuing a bucket list, not only for your own wellbeing but also for your career and for those around you. He and inspires people into action through masterful storytelling and by implementing tiers of accountability to drive them towards their goals.

Ben Nemtin is the #1 New York Times bestselling author of *What Do You Want to Do Before You Die?* and a star of MTV's highest rated show ever on iTunes and Amazon called, *The Buried Life*. As the co-founder of The Buried Life movement, Mr. Nemtin's message of radical possibility has been featured on *The Today Show*, *The Oprah Winfrey Show*, CNN, FOX, and NBC News. President Obama called Nemtin and *The Buried Life* "inspiration for a new generation" and Oprah declared their mission "truly inspiring." In his first year of university, Mr. Nemtin was unexpectedly hit with a depression that forced him to drop out. In an attempt to feel more alive, he created the world's greatest bucket list with his three best friends. They borrowed a rickety old RV and crisscrossed North America, achieving the unthinkable. And most importantly, every time they accomplished a dream, they helped a complete stranger cross something off their bucket list. From playing basketball with President Obama to having a beer with Prince Harry, from reuniting a father and son after seventeen years to surprising a young girl with a much-needed bionic arm, Mr. Nemtin's bucket list quest has inspired millions to thrive personally and professionally.

[Return to Top](#)

Main Stage: Keynote Sessions

SATURDAY MAIN STAGE HIGHLIGHTS

Keynote – Featuring Herman A. Taylor, Jr., MD, MPH
Saturday, October 29 | 8:00am EDT



From Disparities to Precision: Reflections on Achieving Equity in Health and Medicine

Herman A. Taylor, Jr, MD, MPH, is the former director and principal investigator of the Jackson Heart Study, the largest study in history to investigate the inherited factors that affect high blood pressure, heart disease, strokes, diabetes, and other important diseases in African Americans. Dr. Taylor has frequently been cited as one of America's best cardiologists. In 2020 he was named Physician of the Year by the American Heart Association and is among the 100 newest members elected to the National Academy of Medicine. Alleviating health disparities has been an inherent theme of Dr. Taylor's clinical medicine and research career which now spans over three decades. His research has been featured in major scientific and lay publications, from *Nature* and *Circulation* to *The New York Times* and *National Geographic*.

Keynote – Featuring Scott Hamilton
Saturday, October 29 | 8:40am EDT



Undefeated: How to Keep Fighting When the World Says 'Quit'

True greatness can only be achieved by a fierce commitment to going after it with everything you've got, no matter how many times you're knocked down. It means rejecting apathy and staying hungry — refusing to settle for less than excellence. Scott Hamilton's life can be defined by a voracious appetite for greatness. Despite the seemingly insurmountable roadblocks he's endured, he stayed focused, rallying after every setback to take on the next challenge. Mr. Hamilton talks about the journey of the extreme highs and lows of his story, from his days as an Olympic gold medalist figure skater to his four battles with cancer. He shares the secrets of what it takes to cultivate that voracity of spirit and keep going, even when the shadows of obstacles loom large.

The most recognized male figure skating star in the world and figure skating's voice of authority in the U.S., Scott Hamilton has won 70 titles, awards and honors including an Emmy Award nomination, induction into the United States Olympic Hall of Fame, and is a privileged member of the World Figure Skating Hall of Fame. In 1984, Mr. Hamilton captured the attention of the world with his Olympic Gold medal performances in Sarajevo and since has shared his love and enthusiasm for the sport as an analyst/commentator, performer, producer and best-selling author (*Landing It*, 1999; *The Great Eight*, 2009, and *Finish First: Winning Changes Everything*, 2018). Mr. Hamilton further inspires others as a speaker, humanitarian, and as a cancer and pituitary brain tumor survivor.

[Return to Top](#)

Main Stage: Keynote Sessions

AWARD RECOGNITIONS

Saturday, October 29 | 8:30am EDT

The Saturday General Session will also feature the recognition of the AOA award recipients for the following awards:

Journal of Osteopathic Medicine Awards
Diversity, Equity and Inclusion Unification Awards
Outstanding Affiliate Awards
Mentor of the Year Award

SUNDAY MAIN STAGE HIGHLIGHTS

Keynote – Featuring Tom Koulopoulos
Sunday, October 30 | 8:00am EDT



Revealing the Invisible: How Artificial Intelligence is About to Change Everything

The world is at the precipice of one of the most dramatic shifts in history: the transition from an industrial society to one that is based on a deep understanding of an entirely new form of knowledge capital, behavior—our behaviors as well as those of the intelligent machines that we are building.

Tom Koulopoulos is the founder of the Boston-based global futures think tank Delphi Group, which was named one of the fastest growing private companies in the US by *Inc. Magazine*. Mr. Koulopoulos is a frequent business commentator on MSNBC, a columnist for Inc.com, an adjunct professor at Boston University Graduate School of Management, an Executive in Residence at Bentley University, the past

Executive Director of the Babson College Center for Business Innovation, and past Executive Director of the Dell Innovation Lab. Under Mr. Koulopoulos' leadership, the Delphi Group has been providing thought leadership to global organizations on business and technology for over 20 years.

[Return to Top](#)

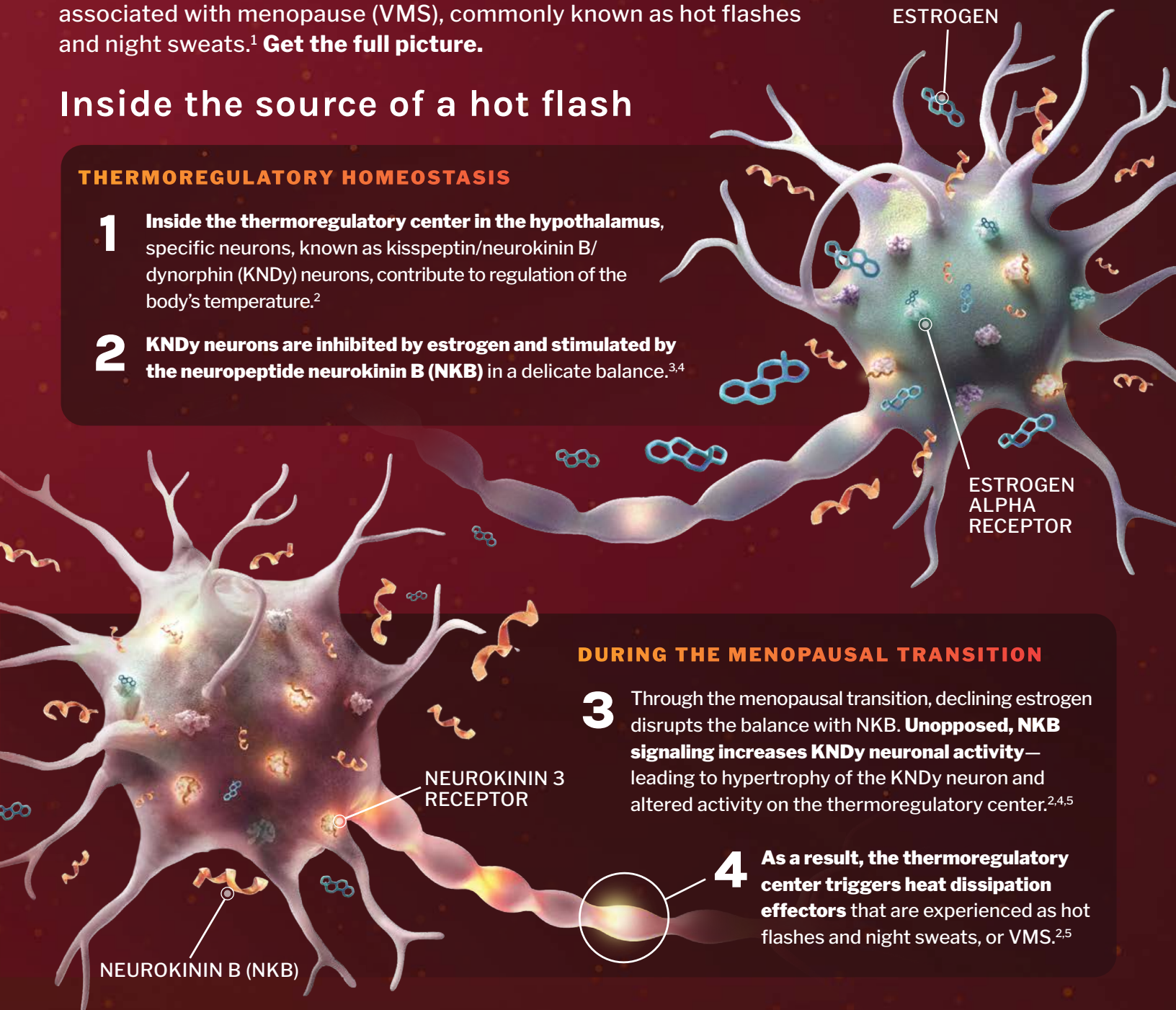
IGNITE YOUR UNDERSTANDING OF VMS AT **BOOTH 400**

Declining estrogen isn't the only cause of Vasomotor Symptoms associated with menopause (VMS), commonly known as hot flashes and night sweats.¹ **Get the full picture.**

Inside the source of a hot flash

THERMOREGULATORY HOMEOSTASIS

- 1** Inside the thermoregulatory center in the hypothalamus, specific neurons, known as kisspeptin/neurokinin B/dynorphin (KNDy) neurons, contribute to regulation of the body's temperature.²
- 2** KNDy neurons are inhibited by estrogen and stimulated by the neuropeptide neurokinin B (NKB) in a delicate balance.^{3,4}



DURING THE MENOPAUSAL TRANSITION

- 3** Through the menopausal transition, declining estrogen disrupts the balance with NKB. **Unopposed, NKB signaling increases KNDy neuronal activity**—leading to hypertrophy of the KNDy neuron and altered activity on the thermoregulatory center.^{2,4,5}
- 4** As a result, the thermoregulatory center triggers heat dissipation effectors that are experienced as hot flashes and night sweats, or VMS.^{2,5}

References: 1. Rapkin AJ. Vasomotor symptoms in menopause: physiologic condition and central nervous system approaches to treatment. *Am J Obstet Gynecol* 2007;196(2):97-106. 2. Padilla SL, Johnson CW, Barker FD, Patterson MA, Palmiter RD. A neural circuit underlying the generation of hot flushes. *Cell Rep* 2018;24(2):271-7. 3. Wakabayashi Y, Nakada T, Murata K, et al. Neurokinin B and dynorphin A in kisspeptin neurons of the arcuate nucleus participate in generation of periodic oscillation of neural activity driving pulsatile gonadotropin-releasing hormone secretion in the goat. *J Neurosci* 2010;30(8):3124-32. 4. Krajewski-Hall SJ, Blackmore EM, McMinn JR, Rance NE. Estradiol alters body temperature regulation in the female mouse. *Temperature* 2018;5(1):56-69. 5. Krajewski-Hall SJ, Miranda Dos Santos F, McMullen NT, Blackmore EM, Rance NE. Glutamatergic neurokinin 3 receptor neurons in the median preoptic nucleus modulate heat-defense pathways in female mice. *Endocrinology* 2019;160(4):803-16.



Astellas and the flying star logo are registered trademarks of Astellas Pharma, Inc. ©2022 Astellas Pharma US, Inc. All rights reserved. Printed in USA 058-0189-PM 8/22

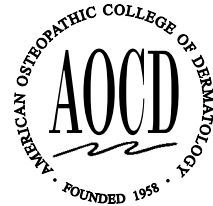


**EXPLORING
THE SCIENCE
BEHIND VMS**



**See a hot flash
in action at
[KnowVMS.com](https://www.knowvms.com)**

OMED22 Specialty College Participation



[Return to Top](#)

COME
SEE US AT
BOOTH 319

Family Medicine Faculty Opportunities

Penn State Health is a multi-hospital health system serving patients and communities across central Pennsylvania. We are seeking BC/BE family medicine physicians to join our growing Penn State Health family in various settings within our health system. Current Opportunities Include:

General family medicine opportunities in the academic or community-based settings located in south central PA (Berks, Cumberland, Dauphin, Lancaster, York Counties, and State College, PA).

The clinical opportunities include both outpatient and inpatient experiences and may be tailored to the applicant's professional interests. Faculty in Academic positions may participate in resident and medical student education and have opportunities for research and scholarship.

Core Faculty Family Medicine Residency Physician-Reading, PA

Faculty in this position will join our team as a member in our 6-6-6 Family and Community Medicine Program at Penn State Health St. Joseph in Berks County, PA. Priority will be given to candidates interested in inpatient medicine or obstetrical services. Duties include teaching, mentoring, advising, and supervising residents; engaging in scholarly activity; and providing patient care.

**Interested candidates please send
CV and letter of interest to**

**Patty Shipton, CPRP,
Physician Recruiter at
pshipton@pennstatehealth.psu.edu**

What We're Offering

- Salary commensurate with qualifications
- Comprehensive benefits package
- Relocation assistance
- We will foster your passion for patient care and cultivate a collaborative environment rich with diversity
- Experienced family medicine colleagues and collaborative leadership



PennState Health

Penn State Health is fundamentally committed to the diversity of our faculty and staff. We believe diversity is unapologetically expressing itself through every person's perspectives and lived experiences. We are an equal opportunity and affirmative action employer. All qualified applicants will receive consideration for employment without regard to age, color, disability, gender identity or expression, marital status, national or ethnic origin, political affiliation, race, religion, sex (including pregnancy), sexual orientation, veteran status, and family medical or genetic information.

Program Descriptions

American Osteopathic Academy of Addiction Medicine (AOAAM)

The American Osteopathic Academy of Addiction Medicine (AOAAM) is offering 15 hours of CME at OMED 2022. The program will include a four-hour DATA 2000 Waiver Training utilizing new materials developed within the Providers Clinical Support System (PCSS). Educational sessions will inform the practicing osteopathic physician on recent changes to national practice guidelines, improve clinicians' ability to treat co-occurring mental health disorders, and thoughtfully examine the changing landscape of addiction medicine. The AOAAM will provide this content live in-person and virtual.

American Osteopathic College of Allergy and Immunology (AOCAI)

The Allergy/Immunology session takes a broad sweep over several topics of interest in allergy for the primary care physician as well as the specialist. The session will introduce the Attendee to anaphylaxis, its causes, its symptomatology, and treatment. A later lecture will delve into food allergy, its triggers, and its treatment other than avoidance. The topic of biological therapy will be discussed lastly. The lecture will review present and new biologic therapeutics used in allergy and immunology. Our goals are to familiarize the audience in these topics and sincerely hope they will enjoy this session.

American Osteopathic College of Dermatology (AOCD)

The American Osteopathic College of Dermatology is proud to be able to provide these educational courses to the live OMED 2022 platform. All AOCD CME activities are planned by a committee comprised of AOA Board Certified Osteopathic Dermatologists. Join the AOCD sessions and update your knowledge on topics ranging from Challenging Cases, Coding, JAK Inhibitors Update, Psoriasis Update, Dermatopathology, Skin Cancers, Hair Loss, PBM's, Burnout and many more Pearls in Dermatology. As a result of attending these activities, the physician will gain knowledge in helping the patient to change behavior to assist them in their treatment. AOCD CME activities are intended to enhance the knowledge and competence of its attendees, with the intended goal being improving patient care and their health outcomes. The impact of our educational meetings will provide a diversified CME program focusing on the art and science of Dermatology.

American College of Osteopathic Emergency Physicians (ACOEP)

Topic areas will encompass information valuable to physicians practicing in a wide spectrum of urgent and emergent care from the Family Medicine Office, Urgent Care and Emergency Departments. The information presented is meant to be valuable to physicians in community and academic centers. The lecture format will be abbreviated allowing only 30-minute presentations to be given by speakers of various related and complimenting specialties.

American College of Osteopathic Family Physicians (ACOFP)

Join the American College of Osteopathic Family Physicians (ACOFP) for a program filled with a variety of interesting topics including retinopathy, obesity, nutrition, hospice and palliative care, stroke prevention and more. ACOFP is also excited to partner with many of our sister societies in providing interdisciplinary education on a number of topics.

[Return to Top](#)

Program Descriptions

American College of Osteopathic Neurologists and Psychiatrists (ACONP)

Neurology and Psychiatry topics will include, Drug/Drug Interaction, Prescribing Cascades, Addiction, Functional Medicine, Schizophrenia, Malingering, Child Abuse, OMM and Cognition, OMM and Application to Neurological Disease, Incarcerated Population Biases, Myalgia, Stiff Person Syndrome, Myofascial Syndrome and more.

American College of Osteopathic Obstetricians and Gynecologists (ACOOG)

The American College of Osteopathic Obstetricians and Gynecologists' Advances in Women's Health held during OMED22 addresses common and uncommon health issues that are unique to women. Participants will gain a comprehensive insight into relevant medical problems most prevalent in women, as well as a basic approach to addressing and improving common health concerns. In addition to didactic and interactive presentations, a hands-on OMT workshop and a special practice management session are also featured. Selected topics include ultrasound imaging, early anatomic survey, cholestasis, obesity, diabetes, genetic screening, abortion access, chronic hypertension, and others.

American Osteopathic College of Occupational and Preventive Medicine (AOCOPM)

AOCOPM has carefully selected timely topics that are addressed by evidence-based lectures. These topics were identified after carefully reviewing knowledge gaps identified in the data from the most recently available job task analysis and aggregated board scores conducted by the American Osteopathic Board of Preventive Medicine (AOBPM). We also wanted to ensure that a significant portion of our 19 hours of planned CME addressed public health issues facing our nation today. Our 19 hours were divided among our three divisions: Public Health and General Preventive Medicine (PH), (2) Occupational Medicine (OM), and (3) Aerospace Medicine (AM).

American Osteopathic Academy of Orthopedics (AOAO)

The American Osteopathic Academy of Orthopedics will address musculoskeletal issues commonly encountered by not only orthopedic surgeons but also primary care physicians and general surgeons. The current concepts included are pediatric orthopedics, medical optimization of orthopedic surgical patients, common upper extremity conditions and hip conditions.

American Academy of Osteopathy (AAO)

Focus on somatic dysfunction will have our expert faculty engage participants with somatic dysfunction from basic definition to application to include all body regions to which osteopathic manipulation is provided. Then a focus on different classic osteopathic manipulations treatment strategies will be provided which include modalities such as myofascial release, muscle energy, HVLA, counterstrain, FPR/STILL. With the ACOPMR group, we will highlight the extremities and PINS technique. With ACOFP a focus on headache and COVID will be provided. Faculty member will proceed in adding their own personal spin to how they treat these body regions as well. By the end of the course, we will have provided updates on current definitions, evidence, research, and systemic applications to the understanding of somatic dysfunction.

[Return to Top](#)

Program Descriptions

American Osteopathic College of Pathology (AOCP)

The American Osteopathic College of Pathologists attempts to incorporate new advances in treatment, new methods of diagnosis or treatment, availability of new medication(s) or indication(s), development of new technology, advances in medical knowledge, and legislative, regulatory, or organizational changes affecting patient care into all CME activities. Gap Statement: Physicians need to understand, update and manage changes in pathology in order to provide optimal patient care. Pathologists in private practice or hospital settings may not have immediate access to new updates in therapies and treatments. This activity will help to close gaps in physician's areas of skin biopsies, needle biopsies, dermatopathology updates, GYN updates, and GI Pathology updates.

American College of Osteopathic Pediatricians (ACOP)

The American College of Osteopathic Pediatricians (ACOP) is excited to be back at OMED22 this fall to present content for the medical professional providing care to children. The ACOP Pediatric Track for OMED22 will feature topics in the following areas: Neonatal/Perinatal Medicine, Pediatric Behavioral Health, Pediatric Cardiology, Pediatric OMM/OMT, Pediatric Infectious Disease, Pediatric Hospital Medicine.

American Osteopathic College of Physical Medicine and Rehabilitation (AOCPMR)

The American Osteopathic College of Physical Medicine and Rehabilitation's (AOCPMR) OMED programming will focus on optimization of Physiatry and Physical Medicine and Rehabilitation in today's healthcare. Topics will include Addiction Treatment, Performing Arts Medicine, Concussion Diagnosis, Treatment and Long-Term Care, Treatment and Care of Long COVID, and a focused block on treatment of the knee, among other topics.

American Osteopathic College of Proctology (AOCP_r)

The American Osteopathic College of Proctology lectures will cover topics including common anorectal disorders, perianal dermatology, and advanced hemorrhoid treatments and procedures. Despite the prevalence of proctology-related concerns, these topics are not addressed enough due to their sensitive nature. From the basics of hemorrhoids and fistulas to specific case studies on rare diseases, this track aims to provide participants with insight on the current and upcoming diagnosis/treatment protocols in the field of proctology.

American Osteopathic Association of Prolotherapy Regenerative Medicine (AOAPRM)

The American Osteopathic Association of Prolotherapy Regenerative Medicine program begins with the fundamental knowledge needed to perform a prolotherapy treatment, followed by a common injury site, the knee. The afternoon lecture presents platelet-rich plasma (PRP) as an advanced prolotherapy treatment for more difficult cases. Day 2 covers treatment to the cervical/thoracic region (advanced), common shoulder injuries and finishes up with elbow, wrist and hand. Both days will end with hands-on clinical evaluations absolutely necessary before administering any prolotherapy treatment.

American Osteopathic College of Radiology (AOCR)

This radiology program contains six lectures covering high-interest topics. The goal of this program is to provide quality education for the general radiologist as well as facilitate interdisciplinary collaboration with other specialties.

[Return to Top](#)

Program Descriptions

American Osteopathic Academy of Sports Medicine (AOASM)

The American Osteopathic Academy of Sports Medicine (AOASM) will present “The Athlete Continuum: From Broken to Recovery.” The program includes cutting-edge sports medicine topics relevant to physicians in all specialties. We will provide in-depth review of common fractures and conditions including their radiographic findings, management, and return to play considerations. The program will also explore interventional management and rehabilitation of simple and complex injuries as well as osteopathic approaches to injuries and treatment. We will also look at the recovery component of the athlete in terms of updated guidelines as well as the impact of psychological, nutritional, and sleep concerns on the athlete.

American Society of Hematology (ASH)

This hematology program contains 10 lectures covering current trends and high-interest topics for all practicing osteopathic physicians. From treating pediatric to adult patients, the goal of this program is to provide robust, current educational content including understanding QI in healthcare, palliative care for chronic hematologic illnesses, social determinants of health in pediatric sickle cell patient population, bleeding and bruising for primary care providers and current trends and update on risk factors in lymphoma and leukemia.



OMED[®]22

#DOProud Experience the Distinction

Oct. 27-30 | Boston, MA | Hybrid

The can't-miss CME event of the year

Register now

omed.osteopathic.org



[Return to Top](#)

Other Programming Descriptions

OMED 2022 AOA Poster Session and Student Poster Competition

Friday, October 28

The AOA Bureau of Osteopathic Research and Public Health holds its Research Poster Session and Student Poster Competition annually during OMED. The Research Poster Session allows investigators to disseminate their research to a broader osteopathic audience. After a competitive Call for Research Abstracts, abstracts are selected for presentation in a poster format. Students whose research projects are selected can elect to participate in the Student Poster Competition. During this competition, student researchers present their research projects to teams of judges in a live, virtual format. Cash prizes are awarded to the nine top-scoring presenters. Accepted abstracts are published in the *Journal of Osteopathic Medicine*.

Student Track

Saturday, October 29 and Sunday, October 30

The OMED 2022 Student Pathway will kick off on Saturday, October 29, and will consist of content that has been carefully selected by the Student Osteopathic Medical Association and will be focused on supplementing the knowledge provided by the COMs and enhancing the opportunities for osteopathic medical students to match into their residencies of choice.

Pre-Medical Student Track

Saturday, October 29 and Sunday, October 30

The Pre-Medical Student Track was created to provide undergraduate students, who are interested in becoming medical doctors, an overview and introduction to becoming a med student. The content selected by Pre-SOMA will give the attendees a Med Student 101, introduce them to OPP, and provide opportunities for the students to hear from DOs and current students.

Resident Track

Saturday, October 29

The AOA will be offering content dedicated to residents and relevant to their stage in their career. This will be an exciting virtual, hybrid and in-person experience that will reflect on life beyond the clinical and academic setting and provide opportunities to connect with their peers and leaders in the osteopathic community.

Innovation Track

Saturday, October 29

The OMED 2022 Innovation Track will present an understanding of digital health in clinical medicine today and what is in development, as well as challenges with digital service adoption and ways to overcome them as a provider or institution. Additionally, the track will review the level of evidence or validation (including lack thereof) of digital health services and what can safely be used in practice today.

Culturally Competent Care Track

Saturday, October 29

The increasing diversity in communities and patient populations brings opportunities for osteopathic physicians and health care systems to create and deliver culturally competent services. This track focuses on practical ways to effectively deliver health care to patients with diverse values, beliefs, and behaviors, including the tailoring of health care delivery to meet patients' social, cultural and linguistic needs. This patient-centered care improves health outcomes and quality of care and provides patients the care they need to live healthier lives. The track will also address steps that can be taken to enhance medical school faculty diversity.

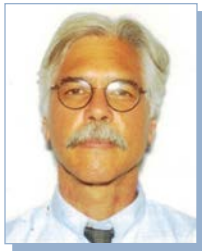
[Return to Top](#)

IN-PERSON

Day	Time	Room	Title	Speaker	CME Credit
10/27/2022	1:00pm-5:00pm	Hynes 312	The Office-Based Treatment for Opioid Use Disorders - Waiver Eligibility Training Part 1	Stephen Wyatt, DO, FAOAAM William Morrone, DO, FAOAAM	4
10/28/2022	9:30am-10:30am	Hynes 312	Updates from ASAM Clinical Practice Guideline on Alcohol Withdrawal Management – 2020	Julie Kmiec, DO, FAOAAM	1
	10:30am- 11:30am	Hynes 312	Update on Opioid Use Disorder Practice Guidelines	Stephen Wyatt, DO, FAOAAM	1
	11:30am-12:30pm	Hynes 312	Journal of Addictive Diseases	R. Gregory Lande, DO, FAOAAM	1
	1:30pm-2:30pm	Hynes 312	The Addiction Medicine Mentorship Program (AMMP): An Innovative Model for Medical Student Addiction Education	James Latronica, DO R. Gregory Lande, DO, FAOAAM Sanisha Balsara Monisha Amin	1
	2:30pm-3:30pm	Hynes 312	Withdrawal Management in Correctional Settings	Jon Lepley, DO, FAOAAM	1
	3:30pm-4:30pm	Hynes 312	SUD and Co-occurring Mood and Anxiety Disorders	Mitch Crawford, DO	1
10/29/2022	9:30am-10:30am	Hynes 312	Outliers: A History of Health Insurance in the United States	James Latronica, DO	1
	10:30am-11:30am	Hynes 312	Clinical, Legal and Ethical Considerations When Treating SUD	William Morrone, DO, FAOAAM	1
	11:30am-12:30pm	Hynes 312	Harm Reduction	Margaret Lowenstein, MD	1
	1:30pm-2:30pm	Hynes 312	Low Barrier Buprenorphine Treatment	Margaret Lowenstein, MD	1
	2:30pm-3:30pm	Hynes 312	Panel Discussion - The Evolution of Addiction Treatment during COVID-19	William Morrone, DO, FAOAAM Julie Kmiec, DO, FAOAAM Mitch Crawford, DO Jon Lepley, DO, FAOAAM (Moderator)	1
	3:30pm-4:00pm	Hynes 312	Cookies and Conversations with the Experts		
	4:00pm-5:00pm	Hynes 312	AOAAM Annual Meeting		

All times listed are Eastern Daylight Savings Time

[Return to Top](#)



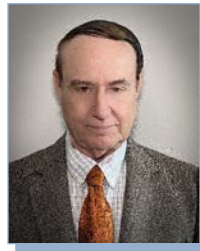
*Stephen A. Wyatt,
DO, FAOAAM*



*William Morrone,
DO, FAOAAM*



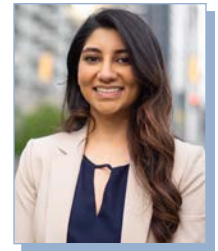
*Julie Kmiec, DO,
FAOAAM*



*R. Gregory Lande,
DO, FAOAAM*



James Latronica, DO



Sanisha Balsara



Monisha Amin



*Jon Lepley, DO,
FAOAAM*



Mitch Crawford, DO



*Margaret Lowenstein,
MD*

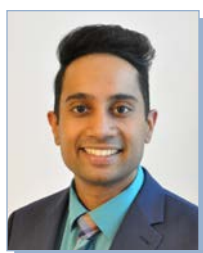
[Return to Top](#)

VIRTUAL

Day	Time	Title	Speaker	CME Credit
10/28/2022	9:30am-10:00am	Anaphylaxis	Aman Kalkat, MD	0.5
	10:30am- 11:15am	Food Allergy	Ashwin Shankar, DO	0.75
	1:00pm – 1:30pm	Biologics in Allergy	Supriya Nagireddi, DO	0.5



Aman Kalkat, MD



Ashwin Shankar, DO



Supriya Nagireddi, DO

All times listed are Eastern Daylight Savings Time

[Return to Top](#)

VIRTUAL

Day	Time	Title	Speaker	CME Credit
10/27/2022	1:00pm-2:00pm	The Osteopathic Approach to Psychosomatic Dermatological Conditions	Suzanne Sirota-Rozenberg, DO	1
	2:00pm-3:00pm	Physician Mental Health and Burnout	Lisa Swanson, MD	1
	3:00pm-4:00pm	Challenging Cases in Dermatology	Francisca Kartono, DO	1
	4:00pm-5:00pm	Tips from a Dermatopathologist	Whitney High, MD	1
10/28/2022	9:30am-10:15am	Cosmetics for the Medical Dermatologist	Michael Gold, MD	0.75
	10:15am-11:00am	The Treatment of Hypertrophic Scars & Keloids with Energy Based Devices	Michael Gold, MD	0.75
	11:00am-11:45am	Rheumatology/Dermatology Update and Challenging Cases from NE Florida	Karthik Krishnamurthy, DO	0.75
	11:45am-12:30pm	How To Avoid Every Skin Surgeon's Worst Nightmare	Carlos Gomez-Meade, DO	0.75
	1:30pm-2:15pm	Training Advanced Practice Providers: Keeping up With the Times	John Minni, DO, FAOCD	0.75
	2:15pm-3:00pm	Coding and 2021 Changes to E&M	Dirk Elston, MD	0.75
	3:00pm-3:45pm	Pearls of Rosacea	Michael Gold, MD	0.75
	3:45pm-4:30pm	Psoriasis Therapies: The Future Just Keeps Getting Brighter	Bradley Glick, DO, FAOCD	0.75
	4:30pm-5:00pm	Janus Kinase Inhibitors Update: Conform or Be Cast Out/Molluscum and Warts: An Update	Neal Bhatia, MD	0.5

All times listed are Eastern Daylight Savings Time

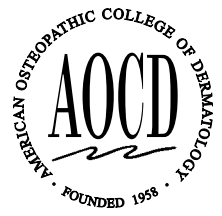
[Return to Top](#)

VIRTUAL

Day	Time	Title	Speaker	CME Credit
10/29/2022	9:30am-10:15am	The Art of Medicine Through the Eyes of a DO Dermatologist	Suzanne Sirota Rozenberg, DO	0.75
	10:15am-11:00am	When Superficial Skin Cancers Recur	Carlos Gomez-Meade, DO	0.75
	11:00am-11:30am	Hair Loss	Matthew Elias, DO, FAOCD	0.5
	11:30am-12:00pm	PBMs How They Affect Our Patients	Mark Kaufmann, MD	0.5
	12:00pm-12:30pm	Pediatric Dermatology The Difficult Patient and Parent	Shoni Rozenberg Seide, DO	0.5
	1:30pm-2:00pm	Dermatopathology Update	Amy Spizuoco, DO, FAOCD	0.5
	2:00pm-3:00pm	Skin Cancer Pearls	Maryam Sickinger, DO	1
	3:00pm-4:15pm	An Update on Melanocytic Lesions	Laszlo Karai, MD, PhD	1.25
	4:15pm-5:00pm	Conundrums in Dermatology in Africa	G. Scott Drew, DO, FAOCD	0.75
10/30/2022	9:00am-10:00am	Resident Lecture Series 1	Baydon Hilton, DO; Chelsea Schwartz, DO Jessica Jones, DO	1
	10:00am-11:00am	Resident Lecture Series 2	Lydia Shedlofsky, DO; Michael Fong, DO; Alexa Broderick, DO; Jazmine Nesvik, DO	1
	11:00am-12:00pm	Dermatomyositis	Brandon Baseshore, DO	1



American Osteopathic College Of Dermatology (AOCD)



Suzanne Sirota-Rozenberg, DO



Lisa Swanson, MD



Francisca Kartono, DO



Whitney High, MD



Veronica Ridpath, DO



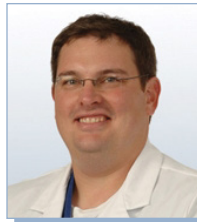
Michael Gold, MD



Karthik Krishnamurthy, DO



Carlos Gomez-Meade, DO



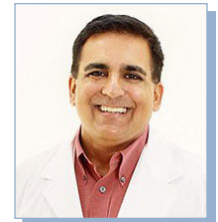
John Minni, DO, FAOCD



Dirk Elston, MD



Bradley Glick, DO, FAOCD



Neal Bhatia, MD



Matthew Elias, DO, FAOCD



Mark Kaufmann, MD



Shoni Rozenberg Seide, DO



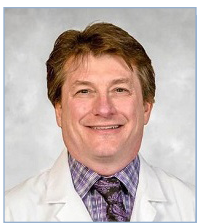
Amy Spizuoco, DO, FAOCD



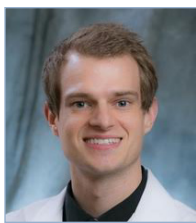
Maryam Sickinger, DO



Laszio Karai, MD, PhD



G. Scott Drew, DO, FAOCD



Baydon Hilton, DO



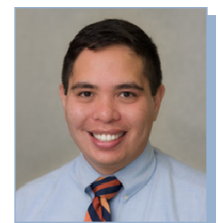
Chelsea Schwartz, DO



Jessica Jones, DO



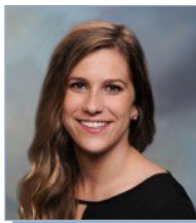
Lydia Shedlofsky, DO



Michael Fong, DO



Alexa Broderick, DO



Jazmine Nesvik, DO



Brandon Baseshore, DO

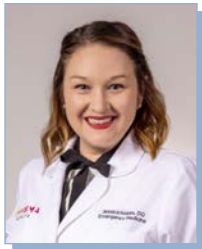
[Return to Top](#)

VIRTUAL

Day	Time	Title	Speaker	CME Credit
10/27/2022	1:00pm-1:30pm	Strangulation: Top Ten Things You Need to Know Now	Jessica Hobbs, DO	0.5
	1:30pm-2:00pm	Evaluation of the Dizzy Patient in the Emergency Department	Ryan Hakimi, DO	0.5
	2:00pm-2:30pm	Pediatric Trauma Nuances	Jeremiah Smith, MD, FAAP	0.5
	2:30pm-3:00pm	OMT for common complaints in the Emergency Department	Victoria Shadiack, DO Anthony Shadiack, DO	0.5
10/28/2022	9:30am-10:00am	Human Development & Well Being in Healthcare	Peter Loper, Jr., MD, MSEd	0.5
	10:00am-10:30am	Pop Goes the Lung! Updates in Pneumothorax	Rebecca Mills, DO	0.5
	10:30am-11:00am	Don't Panic! Review of Electrolyte Emergencies	Tanya Tang, DO	0.5
	11:00am-11:30am	Modern Rib Fracture Management	Michael Mount, DO	0.5
	11:30am-12:00pm	Changing How We Think About Difficult Patients Part 1	Joan Naidorf, DO	0.5
	12:00pm-12:30pm	Changing How We Think About Difficult Patients Part 2	Joan Naidorf, DO	0.5
	2:30pm-3:30pm	Investment Strategies for the Practicing Physician – From One Doc to Another: Fixing Your Finances	Mark Plexousakis, DO	1
10/29/2022	9:30am-10:00am	Pre-Eclampsia	Olubunmi Olarewaju, DO	0.5
	10:00am-10:30am	Airplane Emergencies – Is There a Doctor On-Board?	Alvin Wang, DO	0.5

All times listed are Eastern Daylight Savings Time

[Return to Top](#)



Jessica Hobbs, DO



Ryan Hakimi, DO



*Jeremiah Smith,
MD, FAAP*



Victoria Shadiack, DO



Anthony Shadiack, DO



*Peter Loper, Jr. MD,
MEd*



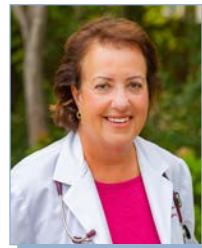
Rebecca Mills, DO



Tanya Tang, DO



Michael Mount, DO



Joan Naidorf, DO



Mark Plexousakis, DO



*Olubunmi
Olawaju, DO*



Alvin Wang, DO

[Return to Top](#)

IN-PERSON

Day	Time	Room	Title	Speaker	CME Credit
10/27/2022	7:45am-8:15am	Hynes Ballroom ABC	Comprehensive Review of Monkeypox	Lokesh Goyal, DO	0.5
	8:15am-10:00am	Hynes Ballroom ABC	Medical Economics Program	Robert Pedowitz, DO, FACOFP David McAtee, DO Nan Gallagher, JD, Esq	1.5
	10:00am-11:00am	Hynes Ballroom ABC	How to Approach Caring for the Transgender Patient. Is There a Difference?	Nicole Wadsworth, DO	1
	11:00am-12:00pm	Hynes Ballroom ABC	The Eyes Have It – Retinopathy and the ABCs of Diabetes Care	Nuha Ali El Sayed, MD	1
	1:00pm-2:00pm	Hynes Ballroom ABC	Managing Worker Expectations of the Return-to-Work Timeline	Leslie Cadet, MD, MPH	1
	2:00pm-3:00pm	Hynes Ballroom ABC	Sudden Unexplained Death in Childhood (SUDC): My Personal Tragedy	Denise Wunderler, DO, FAOASM	1
	3:00pm-4:00pm	Hynes Ballroom ABC	Food Is Medicine: Let's Take a Bite Out of Obesity	Patricia Happel, DO, FACOFP	1
	4:00pm-5:00pm	Hynes Ballroom ABC	Shingles Vaccine	Stanley Grogg, DO, FACOP, FAAP	1

All times listed are Eastern Daylight Savings Time

[Return to Top](#)

IN-PERSON

Day	Time	Room	Title	Speaker	CME Credit
10/28/2022	9:30am-10:30am	Hynes Ballroom ABC	Palliative Care vs Hospice Care	Stella Rubina, DO	1
	10:30am-11:30am	Hynes Ballroom ABC	Ethics of Pandemic Medicine	Emily Copel, DO	1
	11:30am-12:30pm	Hynes Ballroom ABC	Prescribing Cascades	Stephen Scheinthal DO, D.FACN	1
	1:30pm-2:30pm	Hynes Ballroom ABC	Top 5 Problems in the Ankle... and Foot	Adam Bitterman, DO	1
	2:30pm-3:30pm	Hynes Ballroom ABC	Hospice Care vs Comfort Care - Which Is The Way	Stella Rubina, DO	1
	3:30pm-4:30pm	Hynes Ballroom ABC	Stroke Prevention, There's Almost No Such Thing as Heart Disease (It's Just Natural Aging)	Joshua Yamamoto, MD, FACC	1
	4:30pm-5:00pm	Hynes Ballroom ABC	Physician Wellness	Patrick Leary, DO, FACOFP, FAOASM	0.5

All times listed are Eastern Daylight Savings Time

[Return to Top](#)

IN-PERSON

Day	Time	Room	Title	Speaker	CME Credit
10/29/2022	9:30am-10:30am	Hynes Ballroom ABC	A Useful Clinical Approach to Atrial Fibrillation	Joshua Yamamoto, MD, FACC	1
	10:30am-11:00am	Hynes Ballroom ABC	Stress, Anxiety, Arousal, and Burnout in Athletes	Erin Hatch, PsyD	0.5
	11:00am-11:30am	Hynes Ballroom ABC	Unique Patient Populations	Jesse Shaw, DO	0.5
	11:30am-12:30pm	Hynes Ballroom ABC	Ehlers-Danlos Syndrome (EDS) and Hypermobility Spectrum Disorders (HSD) and the Co-Morbid Conditions Associated With It	Bernadette Riley, DO, FACOFP, FILM	1
	1:30pm-2:30pm	Hynes Ballroom ABC	OMM and Acupuncture	Alexander King, DO	1
	2:30pm-3:00pm	Hynes Ballroom ABC	Mind, Body, Spirit	Patrick Leary, DO, FACOFP, FAOASM	0.5
	3:00pm-3:30pm	Hynes Ballroom ABC	The Preparticipation Evaluation Post-COVID	Angela Cavanna, DO, FAOASM	0.5
	3:30pm-4:00pm	Hynes Ballroom ABC	What's in the Bag? A Guide to Sideline Coverage Kits for the Team Physician	John Luksch, DO, FAOASM	0.5
	4:00pm-5:00pm	Hynes Ballroom ABC	2 Minute Office OMT for Common Sports Injuries	Mark Rogers, DO, FAOASM Jason Le, DO	1

All times listed are Eastern Daylight Savings Time

[Return to Top](#)

IN-PERSON

Day	Time	Room	Title	Speaker	CME Credit
10/30/2022	9:00am-9:45am	Hynes Ballroom ABC	COVID-19 and OMT	Eric E. Gish, DO, HPF	0.75
	9:30am-10:15am	Virtual	Project Echo <i>(Virtual Only)</i>	Ted Findlay, DO Joseph Johnson, DO, FACOOG	0.75
	9:45am-10:30am	Hynes Ballroom ABC	Osteopathic Approach to Headache Management	Marta Bringhurst, DO	0.75
	10:15am-10:45am	Virtual	Fad Diets, What Are They? <i>(Virtual Only)</i>	Lina Raves Yousif, DO	0.5
	10:30am-11:15am	Hynes Ballroom ABC	Osteopathic Psychiatry: OMM and Cognitive Disorders	Teodor Huzij, DO, FACN	0.75
	11:15am-12:00pm	Hynes Ballroom ABC	Lifestyle Tips for Health and Wellness as We Age	Lillian Somner, DO	0.75

All times listed are Eastern Daylight Savings Time

[Return to Top](#)



Lokesh Goyal, DO



*Robert Pedowitz, DO,
FCOFP*



David McAtee, DO



*Nan Gallagher,
JD, Esq*



Nicole Wadsworth, DO



*Nuha Ali El
Sayed, MD*



Leslie Cadet, MD, MPH



*Denise Wunderler,
DO, FAOASM*



*Patricia Happel,
DO, FCOFP*



*Stanley Grogg,
DO, FACOP, FAAP*



Stella Rubina, DO



Emily Copel, DO



*Stephen Scheinthal,
DO, D.FACN*



Adam Bitterman, DO



*Joshua Yamamoto,
MD, FACC*



*Patrick Leary, DO,
FCOFP, FAOASM*



Erin Hatch, PsyD



Jesse Shaw, DO

[Return to Top](#)



*Bernadette Riley,
DO, FACOF, FILM*



Alexander King, DO



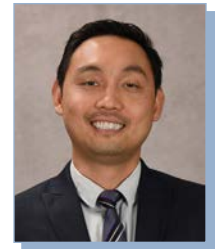
*Angela Cavanna,
DO, FAOASM*



*John Luksch, DO,
FAOASM*



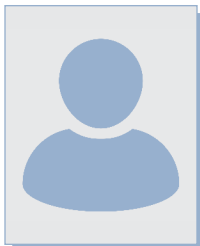
*Mark Rogers, DO,
FAOASM*



Jason Le, DO



Eric E. Gish, DO, HPF



Marta Bringham, DO



Teodor Huzij, DO, FACN



Lillian Somner, DO



Ted Findlay, DO



*Joseph Johnson,
DO, FACOOG*



Lina Raves Yousif, DO

[Return to Top](#)



IN-PERSON

Day	Time	Room	Title	Speaker	CME Credit
10/27/2022	1:15pm-2:30pm	Hynes 309	Myalgia and Muscle Stiffness	David A. Simpson, DO, DFACN, FAAN Susan Lage, DO, FACN	1.5
	2:45pm-3:15pm	Hynes 309	Stiff Person Syndrome and Peripheral Nerve Excitability	David A. Simpson, DO, DFACN, FAAN Susan Lage, DO, FACN	0.75
	3:15pm-4:00pm	Hynes 309	Myofascial Syndrome	David A. Simpson, DO, DFACN, FAAN Susan Lage, DO, FACN	0.75
	4:00pm-5:00pm	Hynes 309	Concussion and Sports Medicine	R. Robert Franks, DO, FAOSM	1
10/28/2022	9:30am-10:30am	Hynes 309	Post-Traumatic Stress Disorder	Jennifer Hailey, DO	1
	9:30am-10:30am	Hynes Ballroom ABC	Palliative Care vs Hospice Care	Stella Rubina, DO	1
	10:30am-11:30am	Hynes 309	Schizophrenia, Past, Present and Future	Justin Faden, DO	1
	10:30am-11:30am	Hynes Ballroom ABC	Ethics of Pandemic Medicine	Emily Copel, DO	1
	11:30am-12:30pm	Hynes Ballroom ABC	Prescribing Cascades	Stephen Scheinthal, DO, D.FACN	1
	1:30pm-2:30pm	Hynes 309	Malingering	Jerome C. Peters, DO, DFACM	1
	2:30pm-3:30pm	Hynes 309	OMM & Applications to Neurologic Disease	Ryan Lynch, DO, FACN	1
	3:30pm-4:30pm	Hynes 309	Neurology and Psychiatry Medications That Have an Effect on Sleep	Nicole Barylski Danner, DO, FACN	1

All times listed are Eastern Daylight Savings Time

[Return to Top](#)



IN-PERSON

Day	Time	Room	Title	Speaker	CME Credit
10/29/2022	9:30am-11:00am	Hynes 309	Medication Intolerant or Resistant Patient: A Functional Medicine Approach	Achina Stein, DO, FACN	1.5
	9:30am-10:30am	Hynes Ballroom ABC	A Useful Clinical Approach to Atrial Fibrillation	Joshua Yamamoto, MD	1
	10:30am-11:00am	Hynes Ballroom ABC	Stress, Anxiety, Arousal, and Burnout in Athletes	Erin Hatch, PsyD	0.5
	11:00am-11:30am	Hynes Ballroom ABC	Unique Patient Populations	Jesse Shaw, DO	0.5
	11:30am-12:30 pm	Hynes Ballroom ABC	Ehlers-Danlos Syndrome (EDS) & Hypermobility Spectrum Disorders (HSD) & the Co-Morbid Conditions Associated With It	Bernadette Riley, DO, FACOFP, FILM	1
	1:30pm-2:30pm	Hynes 309	Drug/Drug Interaction	Ryan Smith, DO, MSED, PhD, FACN	1
	1:30pm-2:30pm	Hynes Ballroom ABC	OMM and Acupuncture	Alexander King, DO	1
	2:30pm-3:30pm	Hynes 309	LGBTQIA+ Youth in Our Clinics Health, Safety and Resilience	Rachel Silliman Cohen, MD	1
	2:30pm-3:00pm	Hynes Ballroom ABC	Mind, Body, Spirit	Patrick Leary, DO, FACOFP, FAOASM	1
	3:00pm-3:30pm	Hynes Ballroom ABC	Updated Return to Play Guidelines Post-COVID-19	Angela Cavanna, DO, FAOASM, CS, FACOI	0.5
	3:30pm-4:00pm	Hynes Ballroom ABC	What's in the Bag? A Guide to Sideline Coverage Kits for the Team Physician	John Luksch, DO, FAOASM	0.5
	3:45pm-4:45pm	Hynes 309	Membership Meeting & Election		

All times listed are Eastern Daylight Savings Time

[Return to Top](#)



IN-PERSON

Day	Time	Room	Title	Speaker	CME Credit
10/29/2022 (Cont'd)	4:00pm-5:00pm	Hynes Ballroom ABC	2 Minute Office OMT for Common Sports Injuries	Mark Rogers, DO, FAOASM, FAAFP Jason Le, DO	1
	6:00pm-7:00pm	Sheraton	Fellows Meeting (must be a fellow to attend) <i>No guests</i>		
	6:30pm-8:30pm	Sheraton	Awards Banquet		
10/30/2022	9:00am-9:45am	Hynes Ballroom ABC	COVID-19 & OMM	Eric E. Gish, DO, HPF	0.75
	9:45am-10:30am	Hynes Ballroom ABC	Osteopathic Approach to Headache Management	Marta Bringhurst, DO	0.75
	10:30am-11:15am	Hynes Ballroom ABC	Osteopathic Psychiatry: OMM and Cognitive Disorders	Teodor Huzij, DO, FACN	0.5
	11:15am-12:00pm	Hynes Ballroom ABC	Lifestyle Tips for Health and Wellness as We Age	Lillian Somner, DO	0.75

[Return to Top](#)

American College of Osteopathic Neurologists and Psychiatrists (ACONP)



David A. Simpson,
DO, DFACN, FAAN



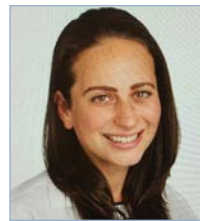
Susan Lage,
DO, FACN



R. Robert Franks,
DO, FAOSM



Jennifer Hailey, DO



Stella Rubina, DO



Justin Faden, DO



Emily Copel, DO



Stephen Scheinthal,
DO, D.FACN



Jerome C. Peters,
DO, DFACM



Ryan Lynch, DO, FACN



Nicole Baryliski
Danner, DO, FACN



Achina Stein,
DO, FACN



Joshua Yamamoto, MD



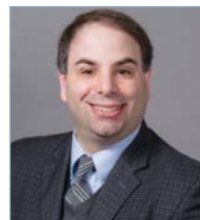
Erin Hatch, PsyD



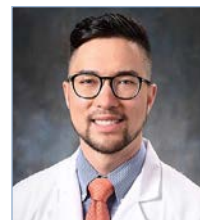
Jesse Shaw, DO



Bernadette Riley,
DO, FACOFP, FILM



Ryan Smith, DO,
MSEd, PhD, FACN



Alexander King, DO



Rachel Silliman
Cohen, MD



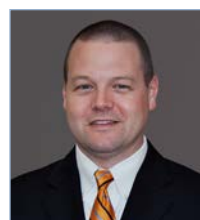
Patrick Leary, DO,
FACOFP, FAOASM



Angela Cavanna, DO,
FAOASM, CS, FACOI



John Luksch, DO,
FAOASM



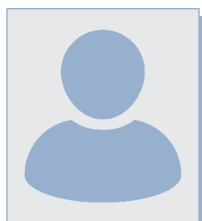
Mark Rogers, DO,
FAOASM, FAAFP



Jason Le, DO



Eric E. Gish, DO, HPF



Marta Bringham, DO



Teodor Huzij,
DO, FACN



Lillian Somner, DO

[Return to Top](#)

IN-PERSON

Day	Time	Room	Title	Speaker	CME Credit
10/27/2022	1:15pm-2:15pm	Hynes 210	Past President's Presentation: Human Trafficking: Your Role As An OBGYN in Prevention, Early Detection & Intervention	Traci Kurtzer, MD	1
	2:15pm-3:00pm	Hynes 210	Placenta Accreta Spectrum	Robert Debbs, DO	0.75
	3:15pm-4:00pm	Hynes 210	Women's Sexual Health: Brief Interventions for Busy Physicians	Laurie Mintz, PhD	0.75
	4:00pm-5:00pm	Hynes 210	Early Anatomic Survey: What Can We See at 11 – 13.6 Week Ultrasound Exam?	Robert Debbs, DO	0.75
10/28/2022	9:30am-10:15am	Hynes 210	Persistent Gaps in Vasomotor Symptoms	Teresa Hubka, DO Danny Koh, DO	0.75
	10:15am-11:00am	Hynes 210	Obesity and Diabetes in Pregnancy	Melisa Lott, DO	0.75
	11:00am-11:45am	Hynes 210	Prenatal Diagnoses of Down Syndrome: Delivering Results in our New Age of Genetic Testing	Brian Skotko, MD Jaclyn Ford, PhD	0.75
	11:45am-12:30pm	Hynes 210	The Legal Landscape of Abortion Access in the US	Becca Hart Holder, JD	0.75
	2:00pm-2:45pm	Hynes 210	Itching to Deliver: Updates on Intrahepatic Cholestasis of Pregnancy	Denisse Holcomb, MD	0.75
	2:45pm-3:30pm	Hynes 210	Uterine Conservation in the Management of Leiomyomas	Jessica Chandler, DO	0.75
	3:30pm-4:15pm	Hynes 210	Mild Chronic Hypertension in Pregnancy: The CHAP Study	Melisa Lott, DO	0.75
	4:15pm-5:00pm	Hynes 210	Advances in Minimally Invasive Gynecologic Surgery (MIGS)	Jessica Chandler, DO	0.75

All times listed are Eastern Daylight Savings Time

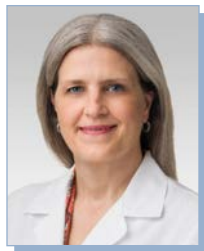
[Return to Top](#)

IN-PERSON

Day	Time	Room	Title	Speaker	CME Credit
10/29/2022	9:30am-12:00pm	Hynes 210	OMT Workshop: An Osteopathic Approach to the Forgotten Fourth Trimester	Meaghan Nelsen, DO	2.5
	1:30pm-2:15pm	Hynes 210	Self-Managed Medication Abortions	Liza Fuentes, DrPH	0.75
	2:15pm-3:00pm	Hynes 210	Age Matters: A Developmental Approach to Contraceptive Counseling for Adolescents	Julie Potter, MD	0.75
	3:00pm-5:00pm	Hynes 210	First Do No Harm: Strategies for Managing Non-Cancer Pain in Your Clinic <i>(This session is supported by the Opioid Analgesic REMS Program Companies (RPC).)</i>	Kristi Herbst Dively, DO	2
10/30/2022	9:30am-12:00pm	Hynes 210	Important Issues in Practice Management: Hook 'Em, Catch 'Em, Keep 'Em: Keeping the Staff in Your Clinic	Chris Kalish, MBA, CMPE Penny Crow, MS	2.5

All times listed are Eastern Daylight Savings Time

[Return to Top](#)



Traci Kurtzer, MD



Robert Debbs, DO



Laurie Mintz, PhD



Teresa Hubka, DO



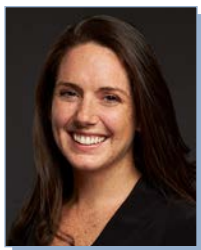
Danny Koh, DO



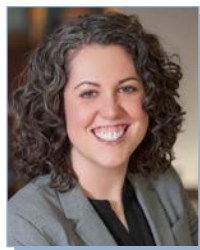
Melisa Lott, DO



Brian Skotko, MD



Jaclyn Ford, PhD



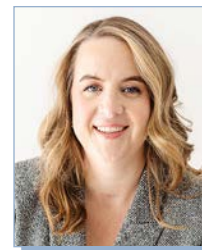
Becca Hart Holder, JD



Denisse Holcomb, MD



Jessica Chandler, DO



Meaghan Nelsen, DO



Liza Fuentes, DrPH



Julie Potter, MD



Kristi Herbst Dively, DO



*Chris Kalish,
MBA, CMPE*



Penny Crow, MS

[Return to Top](#)

IN-PERSON

Day	Time	Room	Title	Speaker	CME Credit
10/27/2022	1:00pm-2:00pm	Hynes 313	Current Impact of Diabetes and PAD	Zachary Arthurs, MD	1
	2:00pm-3:00pm	Hynes 313	The 2022 Monkey Pox Epidemic	Megan May, MS, PhD	1
	3:00pm-4:00pm	Hynes 313	Long COVID: What We Know Through 2022	Megan May, MS, PhD	1
	4:00pm-5:00pm	Hynes 313	Systematic Review and Meta-analysis on Overtime Work on Health Outcomes	Howard Teitelbaum, DO, PhD, FAOCOPM(d)	1
10/28/2022	9:30am-10:30am	Hynes 313	Repetitive Strain Is No Accident: How Ergonomists, Patients and Physicians View Repetitive Strain Development	Thomas McCoy, DO	1
	10:30am-11:30am	Hynes 313	Military Occupational and Environmental Medicine (OEM) Specialty Leaders'/Consultants' Update	Scott Everson, DO, MPH Benjamin Palmer, COL USARMY HQDA OTSG (USA) Max A. Clark, II CDR USN NAVHOSP, CAMPEN CA (USA)	1
	11:30am-12:30pm	Hynes 313	DOT FMCSA Update	Carl Werntz, DO, MPH, FAOCOPM	1
	1:30pm-4:30pm	Hynes 313	Responding to Workplace and Active Violence: Application of a Threat-Based Medical Approach; Violence Against Healthcare Workers; Tips and Tricks to Handle Care Until Help Gets There	Geoffrey L. Shapiro, EMT- P	3

All times listed are Eastern Daylight Savings Time

[Return to Top](#)

IN-PERSON

Day	Time	Room	Title	Speaker	CME Credit
10/29/2022	9:30am-10:30am	Hynes 313	Responding to COVID-19 Effects on Pilot Mental Health	Christopher Flynn, MD	1
	10:30am-11:30am	Hynes 313	Vision and Intracranial Changes in Long Duration Astronauts	James D. Polk, DO, MS, MMM, CPE, FACOEP, FASMA	1
	11:30am-12:30pm	Hynes 313	Sleep, the Third Pillar of Health	John Caldwell, PhD	1
	1:30pm-2:30pm	Hynes 313	Approach to OMM in the Seated Patient	Jose Figueroa, DO, FAOCPPMR, FAAPMR	1
	2:30pm-3:30pm	Hynes 313	Causation Determination in Occupational and Environmental Medicine	Jon O'Neal, MD, MPH, FACEOM	1
	3:30pm-4:30pm	Hynes 313	Managing Worker Expectations of the Return-to-Work Timeline	Leslie Cadet, MD, MPH	1
10/30/2022	9:00am-10:00am	Hynes 313	Obstructive Sleep Apnea and Your Heart	Jon O'Neal, MD, MPH, FACOEM	1
	10:00am-11:00am	Hynes 313	What They Didn't Teach Us in Med School – How to identify Addiction in Pain Patients and What to Do Next	Michael Sprintz, DO, DFASAM	1
	11:00am- 12:00pm	Hynes 313	Acute Injuries and the Fascial Distortion Model	Angela Lim, DO	1

All times listed are Eastern Daylight Savings Time

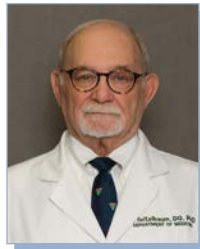
[Return to Top](#)



Zachary Arthurs, MD



Megan May, MS, PhD



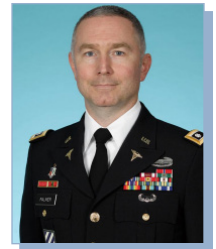
*Howard Teitelbaum,
DO, PhD,
FAOCOPM(d)*



Thomas McCoy, DO



*Scott Everson,
DO, MPH*



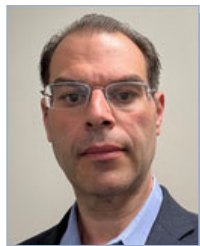
*Benjamin Palmer,
COL USARMY
HQDA OTSG (USA)*



*Max A. Clark, II, CDR
USN NAVHOSP,
CAMPEN CA (USA)*



*Carl Wertz, DO,
MPH, FAOCOPM*



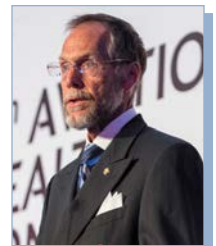
*Geoffrey L. Shapiro,
EMT- P*



Christopher Flynn, MD



*James D. Polk, DO,
MS, MMM, CPE,
FACOEP, FASMA*



John Caldwell, PhD



*Jose Figueroa, DO,
FAOCPMR, FAAPMR*



*Jon O'Neal, MD,
MPH, FACOEM*



Leslie Cadet, MD, MPH



*Michael Sprintz,
DO, DFASAM*



Angela Lim, DO

[Return to Top](#)

VIRTUAL

Day	Time	Title	Speaker	CME Credit
10/29/2022	9:30am-9:55am	Developmental Dysplasia of the Hip	Melissa Martinek, DO	0.25
	9:55am-10:15am	Septic Hip vs. Transient Synovitis	Kent Walker, DO	0.25
	10:15am-10:35am	Perthes Disease	Joseph Rosenblatt, DO	0.5
	10:35am-11:35am	The Limping Child	Julieanne Sees, DO	0.75
	11:35am-12:30pm	Common Pediatric Orthopedic Concerns	Jason Malone, DO	1
	Medical Concerns for the Orthopedic Surgery Patient			
	1:30pm-2:05pm	Medical Optimization for Total Joint Arthroplasty	Richard Crank, DO	0.75
	2:05pm-2:35pm	Diabetes Mellitus as a Risk Factor in Spine Surgery	Jason Eck, DO	0.25
	2:35pm-3:05pm	Smoking and Outcomes in Spine Surgery	Troy Morrison, DO	0.25
	3:05pm-3:35pm	Nutritional Status & Outcomes in Spine Surgery	Troy Morrison, DO	0.25
	Update on Orthopedic Conditions			
	3:35pm-4:05pm	Advancing Care and Research for Traumatic Brain Injury: A Roadmap	Julieanne Sees, DO	0.5
	Update on Hip, Pelvis, Spine, Core Continuum			
	4:05pm-4:30pm	Diagnosis of Hip Disorders: Physical Examination and Principles	Hal Martin, DO	0.25
	4:30pm-4:55pm	Hip Arthroscopy Update	Hal Martin, DO	0.5

All times listed are Eastern Daylight Savings Time

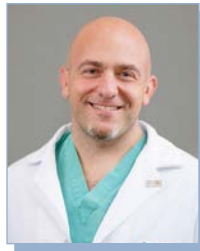
[Return to Top](#)



Melissa Martinek, DO



Kent Walker, DO



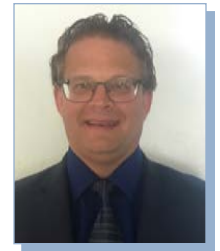
Joseph Rosenblatt, DO



Julieanne Sees, DO



Jason Malone, DO



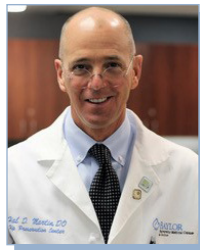
Richard Crank, DO



Jason Eck, DO



Troy Morrison, DO



Hal Martin, DO

[Return to Top](#)

IN-PERSON

Day	Time	Room	Title	Speaker	CME Credit
10/27/2022	8:00am-10:00am	Hynes 302	A Focus on Somatic Dysfunction, Back to Basics	Danielle Cooley, DO	2
	10:00am-12:00pm	Hynes 302	Barriers to Freedoms: Treatment of Cervical Somatic Dysfunction with MET	Michael John Terzella, DO	2
	1:00pm-3:00pm	Hynes 302	Unlocking the Cage: Keys to Restoring Function in the Thoracic Spine	J'Aimee Lippert, DO	2
	3:00pm-5:00pm	Hynes 302	Lumbar Somatic Dysfunction with Focus on Counterstrain	Sajid Surve, DO	2
10/28/2022	9:30am-11:30am	Hynes 302	Rib Dysfunction: Beyond Rib-Raising	Gretta Gross, DO	2
	11:30am-12:30pm	Hynes 302	Evidence Based OMM: Basics of Evidence and Evidence of the Basics	Thomas Motyka, DO	1
	1:30pm-3:30pm	Hynes 302	Basics of Osteopathic Cranial Manipulative Medicine	Eric E. Gish, DO, HPF	2
	3:30pm-5:00pm	Hynes 302	The Core, The Floor, The Foundation: Demystifying the Sacrum and Pelvis	Marta Bringham, DO	1.5
10/29/2022	9:30am-11:30am	Hynes 302	Osteopathic Considerations Within the Abdomen	Reem Abu-Sbaih, DO	2
	11:30am-12:30pm	Hynes 302	Northup Lecture: Reflecting on our Past Reaching for our Future	Michael P. Rowane, DO, MS, FAAFP, FAAO	1
	1:30pm-3:30pm	Hynes 302	PINS for Upper and Lower Extremities	Dennis Dowling, DO, MA, FAAO	2
	3:30pm-4:00pm	Hynes 302	Prolotherapy: An Alternative Approach to Pain Management	Cailee Dean, OMS III	0.5
	4:00pm-5:00pm	Hynes 302	OMM for Performing Artists	Sajid Surve, DO	1

All times listed are Eastern Daylight Savings Time

[Return to Top](#)

IN-PERSON

Day	Time		Title	Speaker	CME Credit
10/30/2022	9:00am-9:45am	Hynes Ballroom ABC	COVID-19 and OMT	Eric E. Gish, DO, HPF	0.75
	9:45am-10:30am	Hynes Ballroom ABC	Osteopathic Approach to Headache Management	Marta Bringham, DO	0.75
	10:30am-11:15am	Hynes Ballroom ABC	Osteopathic Psychiatry: OMM and Cognitive Disorders	Teodor Huzij, DO, FACN	0.75
	11:15am-12:00pm	Hynes Ballroom ABC	Lifestyle Tips for Health and Wellness as We Age	Lillian Somner, DO	0.75



Danielle Cooley, DO



Michael John Terzella, DO



J'Aimee Lippert, DO



Sajid A. Surve, DO, FAOCPMR



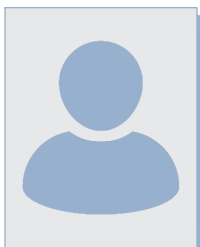
Gretta Gross, DO



Thomas Motyka, DO



Eric Gish, DO, HPF



Marta Bringham, DO



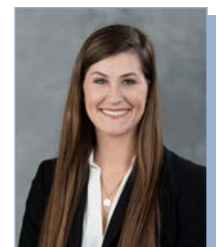
Reem Abu-Sbaih, DO



Michael P. Rowane, DO, MS, FAAFP, FAAO



Dennis Dowling, DO, MA, FAAO



Cailee Dean, OMS III



Teodor Huzij, DO, FACN



Lillian Somner, DO

All times listed are Eastern Daylight Savings Time

[Return to Top](#)

VIRTUAL

Day	Time	Title	Speaker	CME Credit
10/27/2022	1:00pm-2:00pm	Parasitology	Steven Gustafson, DO	1
	2:00pm-3:00pm	Dermatopathology of Summer Skin Conditions	Amy Spizuoco, DO	1
	3:00pm-4:00pm	Brown Stains/Skin Biopsy Technique	Michael Nowak, MD	1
	4:00pm-5:00pm	Metastatic Carcinoma to the Skin	Michael Nowak, MD	1
10/28/2022	9:30am-10:00am	Medicolegal Issues in Dermatopathology	Whitney High, MD	0.5
	10:00am-10:30am	Pigmented Lesions: Moles, Melanoma and Diagnostic/Prognostic Tests	Whitney High, MD	0.5
	10:30am-11:15am	Interesting Cases in GI Pathology Celiac Sprue Update 2021	Laura Michael, DO	0.75
	11:15am-12:00pm	Prostate Needle Biopsies	Randall McGivney, DO	0.75
	12:00pm-12:30pm	Proliferative Breast Disease	Randall McGivney, DO	0.5
	1:30pm-2:30pm	Pearls from the Dermatopathologist	Whitney High, MD	1
	2:30pm-3:30pm	Performance Measures to Demonstrate Quality and Protect Reimbursement in the Context of MACRA/MIPS	Gregary Bocsi, DO	1
10/29/2022	9:30am-10:15am	Thyroid FNA Update	Alan Shienbaum, DO	0.75
	10:15am-10:45am	Entrepreneurship Opportunities in Pathology	Alan Shienbaum, DO	0.5
	10:45am-11:30am	Bedbugs, Ticks, Spiders, and Other Creepy Crawlers	Whitney High, MD	0.75
	11:30am-12:15pm	GYN Updates	Jeanine Chiaffarano, DO	0.75

All times listed are Eastern Daylight Savings Time

[Return to Top](#)



American Osteopathic College of Pathologists (AOCP)



Steven Gustafson, DO



Amy Spizuoco, DO



Michael Nowak, MD



Whitney High, MD



Laura Michael, DO



Randall McGivney, DO



Gregary Bocsi, DO



Alan Shienbaum, DO



*Jeanine
Chiaffarano, DO*

[Return to Top](#)



IN-PERSON

Day	Time	Room	Title	Speaker	CME Credit
10/27/2022	2:00pm-3:00pm	Hynes 311	Autism and Comorbidities	Kathleen P. Petrick, DO	1
	3:00pm-4:00pm	Hynes 311	Helping Parents Navigate Autism	Yamini Howe, MD	1
	4:00pm-5:00pm	Hynes 311	ADHD and Comorbidities	Kathleen P. Petrick, DO	1
10/28/2022	9:30am-10:30am	Hynes 311	Pediatric Acquired Heart Disease	Robert Palermo, DO, FACC	1
	10:30am-11:30am	Hynes 311	Arrhythmia Management in Children and Adolescents	Robert Palermo, DO, FACC	1
	11:30am-12:30pm	Hynes 311	Cardiac Implications of COVID-19 in Active Youth	Eric Fethke, MD	1
	1:30pm-3:00pm	Hynes 311	Pediatric Headache, Otagia and TMJ Refresher OMM Techniques	Joanna Kramer, DO, MPH	1.5
	3:00pm- 4:30pm	Hynes 311	Adapting Your OMT	Meghna Patel, DO	1.5
10/29/2022	9:30am-10:30am	Hynes 311	Meningococcal Disease and Post-COVID Syndromes: What you need to be looking for	Alexandra "Alex" Medoro, MD	1
	10:30am-11:30am	Hynes 311	Update on Congenital Infections	Alexandra "Alex" Medoro, MD	1
	11:30am-12:30pm	Hynes 311	The ABCs of STDs – Update on Treatment of Sexually Transmitted Infections in Adolescents	Lee Ann Conard, DO, FACOP, FAAP	1
	1:30pm-2:30pm	Hynes 311	Updates on Prenatal/Perinatal Screening and Diagnostic Tests	Joshua Baker, DO	1
	2:30pm-3:30pm	Hynes 311	Abnormal Newborn Screen Results – What the NICU Should Do	Joshua Baker, DO	1
	3:30pm-4:30pm	Hynes 311	Neonatal Ethics: Managing Our Ethical Obligations in Our Current Political Climate	Jennifer McGuirl, DO	1

All times listed are Eastern Daylight Savings Time

[Return to Top](#)

IN-PERSON

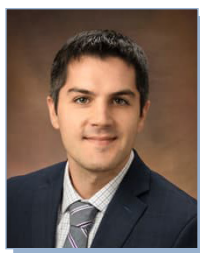
Day	Time	Room	Title	Speaker	CME Credit
10/30/2022	9:00am-10:00am	Hynes 311	Pediatric Gun Violence Prevention / Safety	Eric Fleegler, MD, MPH	1
	10:00am-11:00am	Hynes 311	Current Trends in Pediatric Hospital Admissions	Jeffrey Bergman, DO, FACOP	1
	11:00am-12:00pm	Hynes 311	Improving Physician Communication: How Hospitalists and Community Pediatricians Can Help Each Other	Jeffrey Bergman, DO, FACOP	1



Kathleen P. Petrick, DO



Yamini Howe, MD



Robert Palermo,
DO, FACC



Eric Fethke, MD



Joanna Kramer,
DO, MPH



Meghna Patel, DO



Alexandra "Alex"
Medoro, MD



Lee Ann Conard,
DO, FACOP, FAAP



Joshua Baker, DO



Jennifer McGuirl, DO



Eric Fleegler, MD, MPH



Jeffrey Bergman,
DO, FACOP

All times listed are Eastern Daylight Savings Time

[Return to Top](#)

IN-PERSON

Day	Time	Room	Title	Speaker	CME Credit
10/27/2022	1:00pm-2:00pm	Hynes 310	Viscerosomatic and Somatovisceral Integration	Frank Willard, DO	1
	2:00pm-3:00pm	Hynes 310	Minimizing Risk Of Opioids In Hospitalized Patients	John Bete, DO	1
	3:00pm-4:00pm	Hynes 310	Office Orthopedics And Sports Medicine, A Practical Approach	Lawrence Prokop, DO	1
	4:00pm-5:00pm	Hynes 310	Concussion In Sport: Links To Long Term Neurodegenerative Disease – What Is Known And Unknown	Ross Zafonte, DO	1
10/28/2022	9:30am-10:00am	Hynes 207	The Knee Exam – Simple And Complex	Kevin Noyes, DO, FAOASM	0.5
	10:00am-10:30am	Hynes 310	Musculoskeletal Ultrasound Of The Knee – What, Why, When, and How?	Blake Boggess, DO, FAOASM, FAAFP, FAMSSM	0.5
	10:30am-11:00am	Hynes 310	Exercise Prescription and Rehabilitation for Knee Injuries	Lisa Bartoli, DO	0.5
	11:15am- 11:45am	Hynes 310	Return To Play Considerations And Clearance After Knee Injuries	Warren Bodine, DO	0.5
	11:45am-12:30pm	Hynes 310	OMT For Knee Injuries	Kate Quinn, DO, FAOASM	0.75
	1:30pm-2:30pm	Hynes 310	Treating Long Haul COVID's Complaints Of Fatigue And Tachycardia: Understanding how Dysautonomia, Elevated Symptoms, And Poor Sleep Effect Recovery	Rebecca Lansky, DO	1
	2:30pm-3:30pm	Hynes 310	Treating Long Haul COVID with Physical Therapy, Speech Therapy, And OMT: Learn How Exercise Is Medicine, Proper Breathing Helps, And How OMT Augments Healing	Rebecca Lansky, DO	1
	3:30pm-4:30pm	Hynes 310	Regenerative Medicine For The Knee	Christine Eng, MD	1
	4:30pm-5:00pm	Hynes 310	Entrapment Neuropathy, Radiculopathy, Polyneuropathy	Michael Andary, MD	0.5

All times listed are Eastern Daylight Savings Time

[Return to Top](#)

IN-PERSON

Day	Time	Room	Title	Speaker	CME Credit
10/29/2022	9:30am-10:30am	Hynes 310	What Physicians Should Know About Musicians	Sajid Surve, DO	1
	10:30am-11:30am	Hynes 310	Music Therapy: Exploring the Evidence Base	Joy Allen, PhD	1
	11:30am-12:30pm	Hynes 310	Oh, My Aching Muscles: Myofascial Pain Syndrome	Carina O'Neill, DO	1
	1:30pm-3:30pm	Hynes 302	PINS for Upper and Lower Extremities	Dennis Dowling, DO	2
	3:30pm-4:00pm	Hynes 302	Prolotherapy: An Alternative Approach to Pain Management	Cailee Dean, OMS-III	0.5
	4:00pm- 5:00pm	Hynes 302	OMM for Performing Artists	Sajid Surve, DO	1
10/30/2022	9:00am-10:00am	Hynes 310	Whole Health and Functional Medicine in Pain Management	Ann Cotter, MD	1
	10:00am-10:30am	Hynes 310	Orthotic Management of the Knee; Management of Soft Tissue Injury and Arthritic Tissue	Chris Toelle	0.5
	10:30am-11:00am	Hynes 310	Updates in Prosthetic Rehabilitation for GP's and PM&R	Phil Stevens	0.5
	11:00am-12:00pm	Hynes 310	Physician Documentation for Orthotic and Prosthetic Rehabilitation	Phil Stevens	1

All times listed are Eastern Daylight Savings Time

[Return to Top](#)

American Osteopathic College of Physical Medicine and Rehabilitation (AOCPMR)



Frank Willard, DO



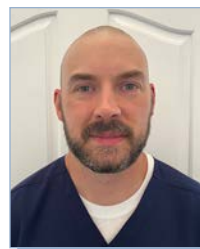
John Bete, DO



Lawrence Prokop, DO



Ross Zafonte, DO



*Kevin Noyes, DO,
FAOASM*



*Blake Boggess, DO,
FAOASM, FAAFP,
FAMSSM*



Lisa Bartoli, DO



Warren Bodine, DO



*Kate Quinn, DO,
FAOASM*



Rebecca Lansky, DO



Christine Eng, MD



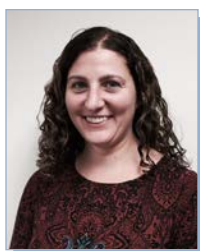
Michael Andary, MD



Sajid Surve, DO



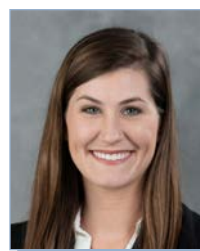
Joy Allen, PhD



Carina O'Neill, DO



Dennis Dowling, DO



Cailee Dean, OMS III



Ann Cotter, DO



Chris Toelle



Phil Stevens

[Return to Top](#)

VIRTUAL

Day	Time	Title	Speaker	CME Credit
10/28/2022	9:30am-10:30am	Rare Anorectal Case Studies	Maziar Ghodsian, DO, JD, FCLM	0.5
	10:30am-11:30am	Hemorrhoids 101	Maziar Ghodsian, DO, JD, FCLM	1
	11:30am-12:30pm	Perianal Dermatology	Maziar Ghodsian, DO, JD, FCLM	1
10/29/2022	9:30am-10:30am	Cosmetic Proctology	Maziar Ghodsian, DO, JD, FCLM	1
	10:30am-11:30am	Anorectal Abscesses and Fistulas	Maziar Ghodsian, DO, JD, FCLM	0.5
	11:30am-12:30pm	Advanced Hemorrhoid Treatments and Procedures	Maziar Ghodsian, DO, JD, FCLM	1
	1:30pm-2:30pm	Common Anorectal Disorders	Maziar Ghodsian, DO, JD, FCLM	1



Maziar Ghodsian,
DO, JD, FCLM

All times listed are Eastern Daylight Savings Time

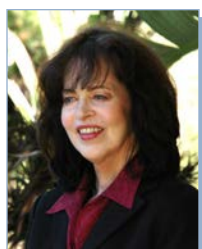
[Return to Top](#)

IN-PERSON

Day	Time	Room	Title	Speaker	CME Credit
10/28/2022	9:30am-10:30am	Hynes 201	Prolotherapy Basics: Solutions and Needle Sizes Based on the Joint Being Treated	Damon Whitfield, DO	1
	10:30am-11:30am	Hynes 201	Prolotherapy for the Knee and Other Things to Consider	Aline Fournier, DO	1
	1:30pm-2:30pm	Hynes 201	PRP/Prolotherapy: When, Why and Where and How	Walter Grote, DO	1
	3:00pm-4:00pm	Hynes 201	Clinical Evaluations Using Regenerative Medicine Techniques	Walter Grote, DO Damon Whitfield, DO Aline Fournier, DO	1
10/29/2022	9:30am-10:30am	Hynes 201	Prolotherapy and Regenerative Medicine Techniques For Treating the Elbow, Wrist, And Hand	Damon Whitfield, DO	1
	11:00am-12:00pm	Hynes 201	Prolotherapy Treatment for the Shoulder	Aline Fournier, DO	1
	1:30pm-2:30pm	Hynes 201	Prolotherapy and Regenerative Medicine Techniques for Treating Cervical and Thoracic Spine	Walter Grote, DO	1
	3:00pm-4:00pm	Hynes 201	Clinical Evaluations Using Regenerative Medicine Techniques	Walter Grote, DO Damon Whitfield, DO Aline Fournier, DO	1



Damon Whitfield, DO



Aline Fournier, DO



Walter Grote, DO

All times listed are Eastern Daylight Savings Time

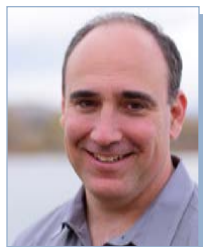
[Return to Top](#)

VIRTUAL

Day	Time	Title	Speaker	CME Credit
10/28/2022	9:30am-10:15am	MRI of Anterior Knee Pain	Kevin Carter, DO, FAOCR	0.75
	10:30am-11:30am	Head Trauma with Review of Blunt Cerebrovascular Injury	William Colantoni, III, DO, MBA	1
	11:30am-12:30pm	Imaging of Acute Stroke	Valerie Jewells, DO, FAOCR, FACR	1
	1:30pm-2:15pm	Seizures: MRI Diagnosis/ Differential & Treatment	Valerie Jewells, DO, FAOCR, FACR	0.75
	2:30pm-3:15pm	Encyclopedia of Endometriosis	Brandon Mason, DO	0.75
	3:30pm-4:15pm	IR Trauma	Philip Orons, DO, FSIR, FAOCR	0.75



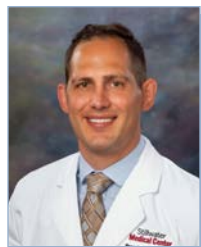
Kevin Carter,
DO, FAOCR



William Colantoni, III,
DO, MBA



Valerie Jewells,
DO, FAOCR, FACR



Brandon Mason, DO



Philip Orons,
DO, FSIR, FAOCR

All times listed are Eastern Daylight Savings Time

[Return to Top](#)

IN-PERSON

Day	Time	Time	Title	Speaker	CME Credit
10/27/2022	4:00pm-5:00pm	Hynes 309	Concussion and Sports Medicine	R. Robert Franks, DO, FAOASM	1
10/28/2022	9:30am-10:00am	Hynes 207	The Knee Exam – Simple and Complex	Kevin Noyes, DO, FAOASM	0.5
	10:00am-10:30am	Hynes 207	Musculoskeletal Ultrasound of the Knee – What, Why, When, and How?	Blake Boggess, DO, FAOASM, FAAFP, FAMSSM	0.5
	10:30am-11:15am	Hynes 207	Exercise Prescription and Rehabilitation for Knee Injuries	Lisa Bartoli, DO	0.75
	11:15am-11:45am	Hynes 207	Return to Play Considerations and Clearance after Knee Injuries	Warren Bodine, DO, FAOASM, FAMSSM, FAAFP	0.5
	11:45am-12:30pm	Hynes 207	OMT for Knee Injuries	Kate Quinn, DO, FAOASM	0.75
	1:30pm-2:15pm	Hynes 207	Management of Foot and Ankle Fractures and Conditions and RTP Considerations	R. Robert Franks, DO, FAOASM	0.75
	2:15pm-3:00pm	Hynes 207	Advanced Radiology of Lower Extremity Fractures and Common Conditions of the Foot and Ankle in Athletes	Jason Smith, DO, FAOASM	0.75
	3:00pm-3:30pm	Hynes 207	Non-Operative Fracture Reduction Techniques	Rance McClain, DO, FAOASM, FACOFP	0.5
	3:30pm-4:15pm	Hynes 207	Radiology of Common Hand and Wrist Fractures and Conditions	Mary Solomon, DO, FAOASM	0.75
	4:15pm-5:00pm	Hynes 207	Management of Hand and Wrists Fractures and Conditions	Priscilla Tu, DO, FAOASM	0.75

All times listed are Eastern Daylight Savings Time

[Return to Top](#)

IN-PERSON

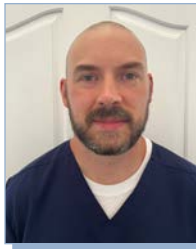
Day	Time	Room	Title	Speaker	CME Credit
10/29/2022	9:30am-10:30am	Hynes Ballroom ABC	A Useful Clinical Approach to Atrial Fibrillation	Joshua Yamamoto, MD	1
	10:30am-11:00am	Hynes Ballroom ABC	Stress, Anxiety, Arousal, and Burnout in Athletes	Erin Hatch, PsyD	0.5
	11:00am-11:30am	Hynes Ballroom ABC	Unique Patient Populations	Jesse Shaw, DO	0.5
	11:30am-12:30pm	Hynes Ballroom ABC	Ehlers – Danlos Syndrome (EDS) and Hypermobility Spectrum Disorders (HSD) and the Co-Morbid Conditions Associated With It	Bernadette Riley, DO, FACOFP, FILM	1
	1:30pm-2:30pm	Hynes Ballroom ABC	OMM and Acupuncture	Alexander King, DO	1
	2:30pm-3:00pm	Hynes Ballroom ABC	Mind, Body, Spirit	Patrick Leary, DO, FACOFP, FAOASM	0.5
	3:00pm-3:30pm	Hynes Ballroom ABC	The Preparticipation Evaluation Post-COVID	Angela Cavanna, DO, CS, FACOI, FAOASM	0.5
	3:30pm-4:00pm	Hynes Ballroom ABC	What's in the Bag? A Guide to Sideline Coverage Kits for the Team Physician	John Luksch, DO, FAOASM	0.5
	4:00pm-5:00pm	Hynes Ballroom ABC	2 Minute Office OMT for Common Sports Injuries	Mark Rogers, DO, FAOASM, FAAFP Jason Le, DO	1
10/30/2022	9:00am-10:00am	Hynes 207	Ride the Pine or Return to Play? Return to Training and Competition Following Cardiac Events	Patrick Hohl, DO	1
	10:00am-10:30am	Hynes 207	Esports Medicine – The Intersection of Sports Medicine and Competitive Video Gaming	Dominic King, DO, FAOASM, FAMIA, CAQSM	0.5
	10:30am-11:00am	Hynes 207	The Nutrition of Injury Recovery	Jeffrey Bytowski, DO, FAOASM	0.5
	11:00am-12:00pm	Hynes 207	The Impact of Sleep on Recovery in the Athlete	Charles Czeisler, MD, PhD	1

All times listed are Eastern Daylight Savings Time

[Return to Top](#)



*R. Robert Franks,
DO, FAOASM*



*Kevin Noyes,
DO, FAOASM*



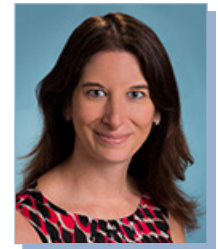
*Blake Boggess,
DO, FAOASM,
FAAFP, FAMSSM*



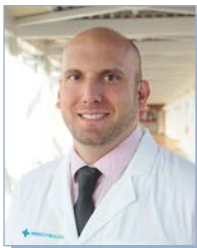
Lisa Bartoli, DO



*Warren Bodine,
DO, FAOASM,
FAMSSM, FAAFP*



*Kate Quinn,
DO, FAOASM*



*Jason A. Smith,
DO, FAOASM*



*Rance McClain, DO,
FAOASM, FACOFP*



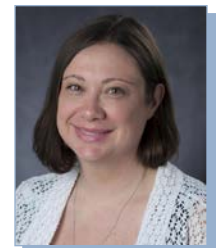
*Mary Solomon,
DO, FAOASM*



*Priscilla Tu,
DO, FAOASM*



Joshua Yamamoto, MD



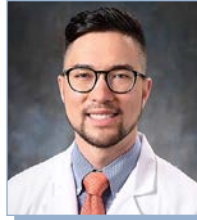
Erin Hatch, PsyD



Jesse Shaw, DO



*Bernadette Riley,
DO, FACOFP, FILM*



Alexander King, DO



*Patrick Leary, DO,
FACOFP, FAOASM*



*Angela Cavanna, DO,
CS, FACOI, FAOASM*



*John Luksch,
DO, FAOASM*



*Mark Rogers, DO,
FAOASM, FAAFP*



Jason Le, DO



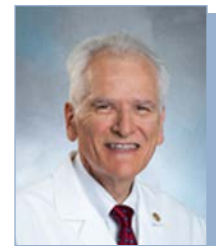
Patrick Hohl, DO



*Dominic King,
DO, FAOASM,
FAMIA, CAQSM*



*Jeff Bytomski,
DO, FAOASM*



*Charles Czeisler,
MD, PhD*

[Return to Top](#)

VIRTUAL

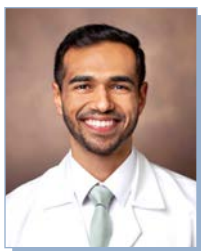
Day	Time	Title	Speaker	CME Credit
10/28/2022	9:30am-10:30am	ITP: Guidelines on What to Do with Pediatric Thrombocytopenia	Melissa J. Rose, DO	1
	10:30am- 11:30am	Diagnosis and Treatment of Iron Deficiency, Restrictive Transfusion Practices, and Overview of Erythropoietin-Stimulating Agents	Ronak Mistry, DO	1
	11:30am-12:30pm	Social Determinants of Health in Pediatrics: with a Focus on the Pediatric Sickle Cell Patient Population	Janisha Patel, DO	1
	1:30pm-2:30pm	Palliative Care Approach to Chronic Hematologic Conditions	Priyal Patel, DO	1
	2:30pm-3:30pm	Making Quality Time to Integrate Quality Improvement in Healthcare	Meghan Drayton Jackson DO, MBOE, CPPS	1
10/29/2022	9:30am-10:30am	Easy Bleeding and Bruising for the Primary Care Provider	Andrew "AJ" Picca, DO	1
	10:30am-11:30am	The Treatment of Hodgkin Lymphoma: Post-Acute and Long-Term Survivorship	Andrew M. Evens, DO, MBA, MSc	1
	11:30am-12:30pm	Sickle Cell Disease: Beyond the Pain Crisis	Paige E. Patterson, DO	1
	2:30pm-3:30pm	Current Trends in Incidence and Survival and Update on Risk Factors for Lymphoma and Leukemia	Wendy Cozen, DO, MPH	1

All times listed are Eastern Daylight Savings Time

[Return to Top](#)



Melissa J. Rose, DO



Ronak Mistry, DO



Janisha Patel, DO



Priyal Patel, DO



*Meghan Drayton
Jackson DO,
MBOE, CPPS*



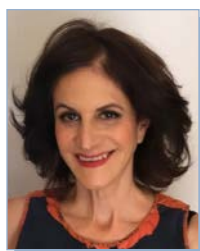
Andrew "AJ" Picca, DO



*Andrew M. Evens,
DO, MBA, MSc*



*Paige E.
Patterson, DO*



*Wendy Cozen,
DO, MPH*

[Return to Top](#)

IN-PERSON

Day	Time	Room	Title	Speaker
10/29/2022	9:30am-10:00am	Hynes Hall B	Keynote Address: My Path and Lessons	Ross Zafonte, DO
	9:30am-10:20am	Hynes 206	The Potential Impact of Incorporating Financial Literacy Into Medical School and Residency Curricula	Nii Darko, DO, MBA Renée Darko, DO, MBA
	10:00am-10:30am	Hynes Hall B	Basics of Advocacy and Letter Writing	Sean Neal
	10:30am-10:50am	Hynes Hall B	Food Insecurities Project	Curtis McInnis, OMS IV Lawsen Parker, OMS III
	10:30am-11:20am	Hynes Hall C	Mix and Mingle <i>(Pre-Register Only)</i>	
	10:50am-11:20am	Hynes Hall B	The TEAM Approach to Care of Patients with Opioid Use Disorder	Jean Bernhardt, PhD
	11:30am-12:20pm	Hynes Hall B	Trauma Informed Care: Recognizing and Responding to Trauma	Heather Forkey, MD
	11:30am-12:20pm	Hynes 206	OPP Session	Selena Raines, DO
	12:30pm-1:30pm	Hynes Hall C	AOA Mentor Café <i>(Invite Only)</i>	
	1:30pm-2:20pm	Hynes Hall B	Writing Your Curriculum Vitae	Julianna Viviani, MA, CPRW
	1:30pm-2:20pm	Hynes 206	OPP Session	Teresa Hubka, DO
	2:30pm-3:30pm	Hynes Hall B	Combating Health Misinformation and Disinformation: Effective Use of Social Media	Omar Lateef, DO
	3:30pm-4:20pm	Hynes Hall B	Advocacy in Action	Karen Abdool, MD, PhD
	6:30pm-7:30pm	Hynes 200	SOMA Networking Social	
	8:30pm-10:30pm	Sheraton Grand Ballroom	SOMA Foundation Fall Awards Reception	
10/30/2022	9:00am-9:50am	Hynes 206	Introduction to Overdose Prevention	Miranda Reed, OMS II
	9:00am-10:50am	Hynes 208	SOMA Organization Fair	
	9:00am-9:50am	Hynes Hall B	Disaster Medicine	Andrew Shanes Ilana Shecter
	10:00am-10:50am	Hynes 206	Wellness Event: The Enneagram and You	Lindsay Hock, OMS III
	10:00am-10:50am	Hynes Hall B	Osteopathic Medical Licensure & Discipline – Tips and Tricks for New and Prospective Licensees	Barbara E. Walker, DO Alexios G. Carayannopoulos, DO, MPH
	11:00am-11:50am	Hynes Hall B	Keynote Address: Physician Well-Being	Julianne Sees, DO

All times listed are Eastern Daylight Savings Time

[Return to Top](#)



Ross Zafonte, DO



Nii Darko, DO, MBA



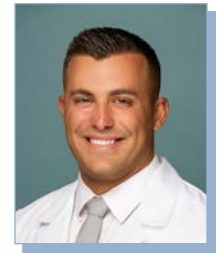
Renée Darko, DO, MBA



Sean Neal



*Curtis McInnis,
OMS IV*



*Lawsen Parker,
OMS III*



Jean Bernhardt, PhD



Heather Forkey, MD



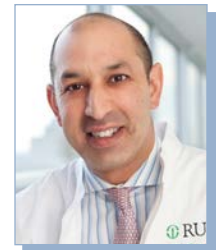
Selena Raines, DO



*Julianna Viviani,
MA, CPRW*



Teresa Hubka, DO



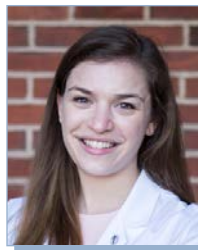
Omar Lateef, DO



*Karen Abdool,
MD, PhD*



Andrew Shanes



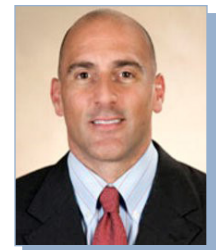
Ilana Shecter



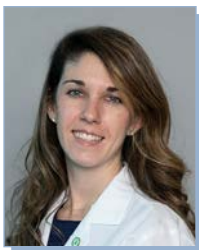
Miranda Reed, OMS II



Barbara Walker, DO



*Alexios G.
Carayannopoulos,
DO, MPH*



Lindsay Hock, OMS III



Julieanne Sees, DO

[Return to Top](#)

IN-PERSON

Day	Time	Room	Title	Speaker
10/29/2022	9:30am-10:00am	Hynes 204	Welcome to OMED	Bailey Borycki, OMS IV Makayla Bussman, OMS III
	10:45am-11:20am	Hynes 204	Intro to OPP	Lindsay Hock, OMS III
	11:30am-12:20pm	Hynes 206	Interactive OPP Session with SOMA	Selena Raines, DO
	1:30pm-2:20pm	Hynes 204	Introduction to Performing a Physical Exam / Trauma Case	Anjali James, OMS IV
	2:30pm-3:20pm	Hynes 204	Pre-Med 101	Amanda Wright, OMS III Kristie Nguyen, OMS III Jessica Kroner, OMS III Jordan Paluch, OMS II
	3:30pm-4:20pm	Hynes Hall B	Advocacy in Action	Karen Abdool, MD, PhD
	6:30pm-7:30pm	Hynes 200	SOMA Networking Social	
10/30/2022	9:00am-9:50am	Hynes 208	SOMA Organization Fair	
	10:00am-10:50am	Hynes 204	Suturing Workshop	Kristie Nyugen, OMS III Bailey Borycki, OMS IV
	11:00am-11:50am	Hynes Hall B	Keynote Address: Physician Well-Being	Julieanne Sees, DO



Bailey Borycki,
OMS IV



Makayla Bussman,
OMS III



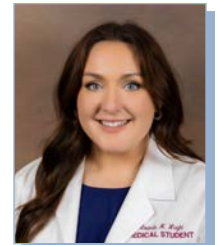
Lindsay Hock, OMS III



Selena Raines, DO



Anjali James,
OMS IV



Amanda Wright,
OMS III



Kristie Nyugen,
OMS III



Jessica Kroner,
OMS III



Jordan Paluch,
OMS II



Karen Abdool,
MD, PhD



Julieanne Sees, DO

All times listed are Eastern Daylight Savings Time

[Return to Top](#)

IN-PERSON

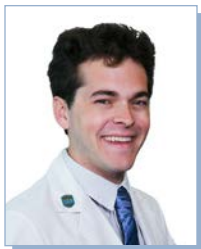
Day	Time	Room	Title	Speaker	CME Credit
10/29/2022	9:30am- 10:30am	Hynes 208	Trauma Informed Care: Recognizing and Responding to Trauma	Heather Forkey, MD	1
	10:30am- 11:30am	Hynes 208	Residency Hacks: How To Be More Efficient & Take Back Your Life	David Shumway, DO	1
	11:30am- 12:30pm	Hynes 208	Not Your Typical Simulation Workshop: Using LEGOs to Train Learners on the Practice of Effective Communication <i>(In-Person Only)</i>	Frances Rusnack, DO	1
	11:30am- 12:30pm	Virtual	Navigating Employment Contracts <i>(Virtual Only)</i>	Shania Seibles, DO, JD	1
	12:30pm-1:30pm	Hynes 200	Resident Networking Lunch (Sponsored by AOA Profiles)		
	1:30pm-2:30pm	Hynes 208	When It Comes to the EKG... The I's have it! – Ischemia, Injury and Infarction	William Schiavone, DO, FACP, FACC	1
	1:30pm-2:30pm	Virtual	Transitioning from Residency to Practicing Medicine <i>(Virtual Only)</i>	Reagan Anderson, DO	0.75
	2:30pm-3:00pm	Hynes 208	Wealth Management <i>(In-Person Only)</i>	Matthew Harrison James Rice	0.5
	3:00pm-3:30pm	Hynes 208	AOA Board Certification	Maura Biszewski	0.5
	3:30pm-4:30pm	Hynes 208	Osteopathic Medical Licensure & Discipline - Tips and Tricks for New and Prospective Licensees <i>(In-Person Only)</i>	Alexios G. Carayannopoulos, DO, MPH Barbara Walker, DO	1
	3:30pm-4:30pm	Virtual	Understanding Pericardial Disease <i>(Virtual Only)</i>	William Schiavone, DO, FACP, FACC	1

All times listed are Eastern Daylight Savings Time

[Return to Top](#)



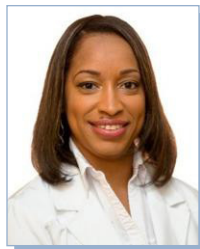
Heather Forkey, MD



David Shumway, DO



Frances Rusnack, DO



*Shania Seibles,
DO, JD*



*William Schiavone,
DO, FACP, FACC*



Reagan Anderson, DO



Matthew Harrison



Maura Biszewski



*Alexios G.
Carayannopoulos,
DO, MPH*



Barbara Walker, DO

[Return to Top](#)

IN-PERSON

Day	Time	Room	Title	Speaker	CME Credit
10/29/2022	1:30pm-2:00pm	Hynes 207	Overview of Digital Medicine and Evaluation Considerations for Safe, Effective, and Equitable Deployment	Linette Demmers, PhD	0.5
	2:00pm-3:30pm	Hynes 207	Implementation of Digital Innovation at Osteopathic Institutions	Mark Zhang, DO, MMSc, FAMIA	1
	3:00pm-3:30pm	Hynes 207	Case Study on Using Data Intelligence to Inform Value-Based Care Delivery	Farhad Modarai, DO	0.5
	3:30pm-4:30pm	Hynes 207	Fireside Chat With Our Digital Health Experts	Mark Zhang, DO, MMSc, FAMIA Linette Demers, PhD Farhad Modarai, DO Sameer Sood, DO	1



Linette Demmers, PhD



Mark Zhang, DO,
MMSc, FAMIA



Farhad Modarai, DO



Sameer Sood, DO

All times listed are Eastern Daylight Savings Time

[Return to Top](#)

IN-PERSON

Day	Time	Room	Title	Speaker	CME Credit
10/29/2022	8:00am-8:30am	Hynes Auditorium	From Disparities to Precision: Reflections on Achieving Equity in Health and Medicine	Herman A. Taylor, Jr, MD, MPH	0
	9:30am -10:30am	Hynes 203	Intersectionality In Medicine: The Cloak of Invisibility	Millicent King Channell, DO, MA, FAAO, FNAOME	1
	10:30am -11:30am	Hynes 203	Underrepresented: How Medical School Faculty Diversity Impacts Patient Care	David E. Garza, DO, MS, MEdL, FACOFP, dist.	1
	11:30am-12:30pm	Hynes 203	Latina/o/x/e, Hispanic, or of Spanish Origin+ (LHS+) Identity: Presence, Leadership and Activism in Medicine	John Paul Sánchez, MD, MPH	1
	1:30pm-2:30pm	Hynes 203	Creating Inclusive, Safe, and Welcoming Environments for LGBTQ+ Patients	Jeffrey Grove, DO Austin Bolay, BA, BS, OMS III Matthew Else, DO Nicole Wadsworth, DO, FACOEP, FACEP	1
	2:30pm-3:30pm	Hynes Hall B	Combating Health Misinformation and Disinformation: Effective Use of Social Media	Omar Lateef, DO	1
	3:30pm-4:30pm	Hynes 203	Empowering Your Patients Through Functional Medicine: It's Not Alternative...It's Osteopathic	Laura F. Robin, DO, MPH, IFMCP	1
	4:30pm-5:00pm	Hynes 203	The Ethical Practice of Medicine: Balancing Beneficence with Stakeholder Expectations	Catherine Anna Marco, MD	0.5

All times listed are Eastern Daylight Savings Time

[Return to Top](#)

Culturally Competent Care



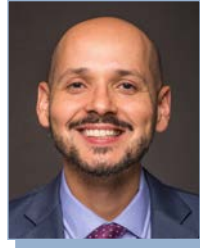
*Herman A. Taylor, Jr,
MD, MPH*



*Millicent King Channell,
DO, MA, FAAO,
FNAOME*



*David E. Garza,
DO, MS, MEdL,
FACOFP, dist.*



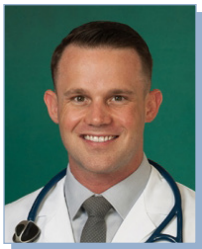
*John Paul Sánchez,
MD, MPH*



Jeffrey Grove, DO



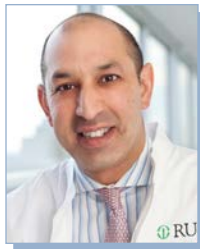
*Austin Bolay,
BA, BS, OMS III*



Matthew Else, DO



*Nicole Wadsworth,
DO, FACOEP, FACEP*



Omar Lateef, DO



*Laura F. Robin,
DO, MPH, IFMCP*



*Catherine Anne
Marco, MD*

[Return to Top](#)



**RSV IS THE #1 CAUSE OF HOSPITALIZATION
IN INFANTS UNDER 12 MONTHS.^{1*}**
ARE ALL INFANTS AT RISK FROM SEVERE RSV DISEASE?

**Severe RSV is unpredictable.
Any infant can be hospitalized
in their first season.^{2†}**

**~72% of infants hospitalized for RSV
were born at term with no
underlying conditions.^{2†}**

To learn more about the real impact of severe RSV disease, visit RethinkRSV.com

RSV, respiratory syncytial virus.

*According to a study of pediatric hospitalizations between 1997 and 2000.

†Surveillance data between October 2014 and April 2015. Among 1,176 RSV-hospitalized infants aged under 12 months, 851 had no reported underlying condition (prematurity was classified as an underlying condition in the study).

References: 1. Leader S, Kohlase K. Recent trends in severe respiratory syncytial virus (RSV) among US infants, 1997 to 2000. *J Pediatr.* 2003;143(5 Suppl):S127-S132.

2. Arriola CS, Kim L, Langley G, et al. Estimated burden of community-onset respiratory virus-associated hospitalizations among children aged <2 years in the United States, 2014-15. *J Pediatric Infect Dis Soc.* 2020;9(5):587-595.

sanofi

SANOFI Discovery Drive Swiftwater, PA 18370.

© 2022 Sanofi Inc. MAT-US-2109483-v2.0-02/2022

**THE VOICE OF
ALL INFANTS**

Research Poster Presentations

VIRTUAL

Friday, October 28

9:00am-1:00pm EDT | 2:00pm-5:00pm EDT

Registration is required to participate in the live virtual Student Poster Competition presentations: [Click here to register](#).
Poster Gallery: [Click here to access the Poster Gallery on and after 10/28/2022](#).

The annual Poster Session and Student Poster Competition provides an opportunity for researchers to disseminate their research to a broader audience. During the Student Poster Competition, student researchers will present their research projects to teams of judges in a live, virtual format (see *Poster Schedule on the the following pages*). Cash prizes are awarded to the nine top-scoring presenters. Accepted abstracts are published in the *Journal of Osteopathic Medicine*.

All poster presentations are pre-recorded and fall within four research categories, Clinical (C), Basic Science (B), Health Services (H), and the newly added area of Public Health (PH) research focused on health disparities and social determinants of health.

Within each of the four categories, the research presentations address the distinctiveness of osteopathic medicine and its impact on one of the following research areas:

- Chronic Diseases and Conditions
- Acute and Chronic Pain Management
- Impact of Osteopathic Manipulative Medicine (OMM) and Osteopathic Manipulative Treatment (OMT)
- Musculoskeletal Injuries and Prevention
- Osteopathic Philosophy
- Health Disparities/Social Determinants of Health

Physicians must [register](#) to view the live, virtual Student Poster Competition presentations, marked with an “*” in the poster schedule on the following pages.

All times listed are Eastern Daylight Savings Time

[Return to Top](#)

Research Poster Presentations

AOA Poster Session and Student Poster Competition Registration Instructions

To participate in the live, virtual Student Poster Competition, [click here](#) to register.

1. Click the “Register for Event”.
2. Enter your email address and password.
NOTE: If you have previously registered, please use your past login credentials.
3. Create your account.
4. You will receive an email from “Remo” confirming your registration. Keep this email so you can set up your profile and enter the event on Friday, October, 28 from 9:00am-1:00pm EDT and 2:00pm-5:00pm EDT.

NOTE:

- Please add this event to your calendar.
- Please bookmark the webpage on your browser.
- Please use Google Chrome or Microsoft Edge on a computer device using an open Wi-Fi network.
- No mobile devices.
- No VPN.
- You only need to register once.

No registration is required to view the recorded poster presentations in the Poster Gallery. The posters and recorded presentations will be available from October 28, 2022, through October 2023.

Physicians can claim up to two (2) credits of AOA Category 2-B CME by viewing the recorded ePosters over the next year. To claim these credits and receive a certificate, the participant must complete and submit a separate attestation form. The form will be available in the Poster Gallery or during the live, virtual poster sessions.

For additional information, contact Gloria Dillard at gdillard@osteopathic.org.

All times listed are Eastern Daylight Savings Time

[Return to Top](#)



Research Poster Presentation Schedule

* = Student Poster Competition

♦ = AOA Funded Project

Poster Number	PI Name	Organization Name	Category	Research Topic	Project Title	Time of Live Presentation EDT Time Zone
*B-1	Eleni Papadopoulos, OMS-III	Rowan University School of Osteopathic Medicine	Basic Science	Chronic Diseases & Conditions	Examining levels of catecholamine neurotransmitter regulatory proteins within the prefrontal cortex of rodents following traumatic brain injury	2:00pm-2:20pm
*B-2	Derek Tai, OMS-IV	Touro University Nevada College of Osteopathic Medicine	Basic Science	Impact of OMM & OMT	Levels of Beta-endorphin in Extracellular Vesicles as Efficacy Marker for Osteopathic Manipulative Treatment of Patients with Neuropathic Pain	2:30pm-2:50pm
*B-3	Julie Brett Ochs, OMS-II	New York Institute of Technology	Basic Science	Chronic Diseases & Conditions	A DBA/2J Strain Mouse Model of Warfarin-Induced Calcification: A Pilot Study Investigating Ultrasound Physiological Parameters	9:30am-9:50am
*B-4	Gagandeep Gill, OMS-II	Touro University College of Osteopathic Medicine-CA	Basic Science	Chronic Diseases & Conditions	Does Intestinal Fructose Metabolism Occur in Humans?	3:00pm-3:20pm
*B-5	Marc Matossian, OMS-II	Touro University College of Osteopathic Medicine-CA	Basic Science	Chronic Diseases & Conditions	Measuring the Oxidation of Varying 2- ¹³ C Fructose Loads During a 6-hour Feeding Protocol	3:30pm-3:50pm
*B-6	Kelsey Donoughe, OMS-II	West Virginia School of Osteopathic Medicine	Basic Science	Chronic Diseases & Conditions	Hypomethylating Agent Azacitidine in Treating Regular and Brain Metastasized HER2-positive Breast Cancer	4:00pm-4:20pm
*B-7	Claire Saunders, OMS-III	Liberty University College of Osteopathic Medicine	Basic Science	Chronic Diseases & Conditions	Determining the Effect of Diet on Markers of Lipid Metabolism in a Mouse Model of Hypertension	10:00am-10:20am
*B-8	Creighton Kellogg, OMS-III	Edward Via College of Osteopathic Medicine-South Carolina	Basic Science	Chronic Diseases & Conditions	Role of Noncanonical NF-kB Signaling in The Development of Intestinal Cell Subpopulations	9:00am-9:20am
*B-9	Daljit Girm, OMS-I	Touro University College of Osteopathic Medicine-CA	Basic Science	Chronic Diseases & Conditions	Cannabinoid Receptor CB1R Regulates Craniofacial Morphogenesis in Xenopus laevis Embryos	10:30am-10:50am
*B-10	Zachary M.S. Waarala, OMS-II	Michigan State University College of Osteopathic Medicine	Basic Science	Acute and Chronic Pain Management	Establishing a mouse model of massage-like stroking-induced analgesia	2:30pm-2:50pm
*B-11	Dahir Hassan, OMS-III	Edward Via College of Osteopathic Medicine-Louisiana	Basic Science	Chronic Diseases & Conditions	Novel combination of protein SUMOylation inhibitor and enzalutamide inhibits the aggressive phenotypes of prostate cancer cells	9:30am-9:50am
*B-12	Shebin Tharakan, OMS-I	New York Institute of Technology	Basic Science	Musculoskeletal Injuries and Prevention	Characterization of Fluid Uptake in 3D Bioprinted β -Tricalcium Phosphate/Alginate Scaffolds doped with Strontium	2:30pm-2:50pm
*B-13	Makayla Lund, OMS-III	New York Institute of Technology College of Osteopathic Medicine at Arkansas	Basic Science	Impact of OMM & OMT	Use of Osteopathic Manipulative Medicine in Treating Migraines	11:00am-11:20am

All times listed are Eastern Daylight Savings Time

[Return to Top](#)



Research Poster Presentation Schedule

* = Student Poster Competition

♦ = AOA Funded Project

Poster Number	PI Name	Organization Name	Category	Research Topic	Project Title	Time of Live Presentation EDT Time Zone
*B-14	Michael Bien, OMS-II	Philadelphia College of Osteopathic Medicine-Georgia Campus-GA	Basic Science	Chronic Diseases & Conditions	The Effect of Cerebellar Transcranial Electrical Stimulation (tES) on Rat Thalamic Neuron Firing Rates Using an in Vivo Approach	10:00am-10:20am
*B-15	Shirley Chua, OMS-II	West Virginia School of Osteopathic Medicine	Basic Science	Acute and Chronic Pain Management	Examination of Alterations in Glial Activation and Cortical Volume in Moderate Pain Model	3:00pm-3:20pm
*B-16	Dillon Haughton, OMS-III	Burrell College of Osteopathic Medicine	Basic Science	Osteopathic Philosophy	Fryette Mechanics Not Appreciated in Radiography of Lumbar Vertebrae Using 3D Symmetry Plane Analysis	3:00pm-3:20pm
*B-17	Cailee Dean, OMS-III	Campbell University-Jerry M. Wallace School of Osteopathic Medicine	Basic Science	Acute and Chronic Pain Management	Investigating the Mechanism of Prolotherapy: the Fibroblast Response to Dextrose in vitro	3:30pm-3:50pm
*B-18	Preston McClain Allison, OMS-II	West Virginia School of Osteopathic Medicine	Basic Science	Chronic Diseases & Conditions	STK11IP Overexpression in Simian Cell Models to Determine Host Protein Interactions in Rotavirus Infected Cells	11:00am-11:20am
*B-19	Gregory Brantley Lawson, OMS-II	West Virginia School of Osteopathic Medicine	Basic Science	Chronic Diseases & Conditions	STK11IP and AMPK cascade protein identification in cells infected with recombinant rotavirus by subcellular fractionation	10:30am-10:50am
*B-20	Dawniel Facque, MA, OMS-II	Midwestern University Arizona College of Osteopathic Medicine	Basic Science	Osteopathic Philosophy	Trends in Osteopathic Research: An Evaluation of Presentation Topics at OMED from 2018 Through 2021.	3:30pm-3:50pm
*B-21	Ariana Eugenia G. Faraji, OMS-III	Edward Via College of Osteopathic Medicine-Louisiana	Basic Science	Chronic Diseases & Conditions	Selective Sweep Analysis as a Tool to Detect Mutations that Increase SARS-CoV-2 Virulence	11:00am-11:20am
*B-22	Samantha Johnson, OMS-II	Western University of Health Sciences College of Osteopathic Medicine of the Pacific	Basic Science	Acute and Chronic Pain Management	Osteopathic and podiatric medical students' attitudes toward low back pain	4:30pm-4:50pm
*♦B-23	Kathryn Cerami, OMS-II	Burrell College of Osteopathic Medicine	Basic Science	Impact of OMM & OMT	Effect of Occipito-Atlantal Decompression, Transcutaneous Auricular Vagus Nerve Stimulation, and the Splenic Pump on Circulatory Immune Cell Numbers	11:30am-11:50am
*B-24	Raj Shah, OMS-III	Midwestern University Chicago College of Osteopathic Medicine	Basic Science	Chronic Diseases & Conditions	Loss of Tumor Suppressor Gene Rb1 Affects Osteoblast Specific miRNA Expression and Function	11:30am-11:50am
*B-25	Love Opoku Afrifa, OMS-II	Burrell College of Osteopathic Medicine	Basic Science	Chronic Diseases & Conditions	Mycoplasma genitalium detection using Loop Mediated Isothermal Amplification (LAMP)	12:00pm-12:20pm

All times listed are Eastern Daylight Savings Time

[Return to Top](#)



Research Poster Presentation Schedule

* = Student Poster Competition

♦ = AOA Funded Project

Poster Number	PI Name	Organization Name	Category	Research Topic	Project Title	Time of Live Presentation EDT Time Zone
*C-1	Elena Tran, OMS-III	Lake Erie College of Osteopathic Medicine-Erie	Clinical	Impact of OMM & OMT	Osteopathic Manipulative Treatment Efficacy in Mean HIT-6 Score Reduction in Tension-Type Headaches: A Meta-Analysis	9:00am-9:20am
*C-2	Stephanie Lourdes Echeverria, MPH, MBS, OMS-II	Midwestern University Arizona College of Osteopathic Medicine	Clinical	Chronic Diseases & Conditions	Sotrovimab Outcomes in Adult Outpatients with COVID-19 at a Community Hospital During an Omicron Surge	9:00am-9:20am
C-3	Abby Rhoads, DO	St. Luke's University Health Network-Bethlehem Campus	Clinical	Impact of OMM & OMT	Thoracic Pump as Adjunctive Therapy to Wean Oxygen Supplementation in the Hospitalized COVID-19 Patient.	No Live Presentation
*C-4	Joshua Hicks, OMS-IV	Rocky Vista University College of Osteopathic Medicine-Southern Utah	Clinical	Chronic Diseases & Conditions	Inappropriate albumin utilization at a community hospital: A retrospective cohort study	9:30am-9:50am
*C-5	Barbara Senger, OMS-IV	A.T. Still University Kirksville College of Osteopathic Medicine	Clinical	Impact of OMM & OMT	Impact of osteopathic manipulative techniques on the management of dizziness caused by neuro-otologic disorders: Systemic review and meta-analysis	9:30am-9:50am
*C-6	Nathan Wilks, OMS-IV	Pacific Northwest University of Health Sciences College of Osteopathic Medicine	Clinical	Chronic Diseases & Conditions	Responsiveness of inhaled epoprostenol on patients with respiratory failure due to COVID-19 at a community hospital	10:00am-10:20am
*C-7	Daryl O'Neal Traylor, MS, MPH, PhD, OMS-I	University of the Incarnate Word School of Osteopathic Medicine	Clinical	Health Disparities-Social Determinants of Health	PrEP prescribing by Southern U.S. Primary Care Providers	9:00am-9:20am
C-8	Andrew Bergloff, DO	Ascension Genesys	Clinical	Osteopathic Philosophy	Obstetrics and Gynecology Resident Confidence Performing Urinary Incontinence Slings Prior to Graduation	No Live Presentation
*C-9	Rachel O'Connor, OMS-II	Ohio University Heritage College of Osteopathic Medicine	Clinical	Acute and Chronic Pain Management	Evaluation of Ropivacaine and Liposomal Bupivacaine Pectoral Blocks for Pain Management Following Breast Surgery	2:00pm-2:20pm
*C-10	Colby Adamson, OMS-III	Rocky Vista University College of Osteopathic Medicine -Southern Utah	Clinical	Chronic Diseases & Conditions	Ultrasound Derived Fat Fraction (UDFF) and MRI-PDFF of Adult Liver: A Preliminary Observation	10:30am-10:50am
*C-11	Lerone Clark, OMS-III	New York Institute of Technology	Clinical	Impact of OMM & OMT	The Effects of Upper Trapezius Muscle Energy Technique on Pain, Muscle Tension and Cervical Range of Motion Using the MyotonPRO	10:00am-10:20am

All times listed are Eastern Daylight Savings Time

[Return to Top](#)



Research Poster Presentation Schedule

* = Student Poster Competition

♦ = AOA Funded Project

Poster Number	PI Name	Organization Name	Category	Research Topic	Project Title	Time of Live Presentation EDT Time Zone
*C-12	Cailee Dean, OMS-III	Campbell University- Jerry M. Wallace School of Osteopathic Medicine	Clinical	Impact of OMM & OMT	Assessing Validity and Reproducibility of Goniometry: Establishing the Use of a Markerless Video Motion Capture System	10:30am-10:50am
*C-13	Wesley Gregory, OMS-IV	Edward Via College of Osteopathic Medicine- South Carolina	Clinical	Chronic Diseases & Conditions	The Incidence of Respiratory Syncytial Virus (RSV) Bronchiolitis and Concomitant Urinary Tract Infection (UTI) in Young Infants.	11:00am-11:20am
*C-14	Rachel Wilks, OMS-IV	Pacific Northwest University of Health Sciences College of Osteopathic Medicine	Clinical	Chronic Diseases & Conditions	Impact of diabetes mellitus on patients with sepsis at a community hospital	11:30am-11:50am
*C-15	Madison George, OMS-II	Michigan State University College of Osteopathic Medicine	Clinical	Osteopathic Philosophy	Barriers to Research Opportunities Among Osteopathic Medical Students	2:00pm-2:20pm
C-16	Lara Householder, DO	Maine Dartmouth Family Medicine Residency	Clinical	Impact of OMM & OMT	A Feasibility Study to Assess OMT for NAS	No Live Presentation
*C-17	Bryan Pham, OMS-III	Center for Neuromusculoskeletal Clinical Research	Clinical	Impact of OMM & OMT	Beliefs and Attitudes About Opioid Prescribing in Patients With Low Back Pain: A Survey of Osteopathic Physicians	11:30am-11:50am
*C-18	Natalie Ohlde, OMS-III	Western University of Health Sciences College of Osteopathic Medicine of the Pacific- Oregon	Clinical	Osteopathic Philosophy	Postoperative Urinary Functional Outcomes in Patients with Simultaneous Prostatectomy and Mesh Hernia Repair VS Isolated Prostatectomy	3:00pm-3:20pm
C-19	Lucas Lloyd, DO	Kingman Regional Medical Center	Clinical	Health Disparities-Social Determinants of Health	The effects of positive preoperative SARS-CoV-2 testing on outpatient procedures at a community hospital	No Live Presentation
*C-20	Violeta Foss, OMS-III	New York Institute of Technology	Clinical	Impact of OMM & OMT	The use of osteopathic manipulative treatment (OMT) in the management of patients with post-COVID symptoms	12:00pm-12:20pm
*C-21	Darcy Alexis Davis, OMS-III	Edward Via College of Osteopathic Medicine- South Carolina	Clinical	Chronic Diseases & Conditions	Prescribing Patterns For Cystitis In Women With An Allergy To Guideline Recommended Antimicrobials	12:00pm-12:20pm
*C-22	Dakota Becker- Greene, OMS-II	Edward Via College of Osteopathic Medicine- South Carolina	Clinical	Health Disparities-Social Determinants of Health	Disparities between Demographics in Pediatric Prescriptions and Diagnoses in Latin America	3:30pm-3:50pm
*C-23	Christopher Cacciatore, OMS-III	Edward Via College of Osteopathic Medicine- Auburn	Clinical	Chronic Diseases & Conditions	The Analysis of Dietary Recalls for Students Enrolled In An Interdisciplinary Culinary Medicine Elective To Enhance Personal Health, Knowledge, and Confidence With Counseling On Nutrition	12:30pm-12:50pm

All times listed are Eastern Daylight Savings Time

[Return to Top](#)



Research Poster Presentation Schedule

* = Student Poster Competition

♦ = AOA Funded Project

Poster Number	PI Name	Organization Name	Category	Research Topic	Project Title	Time of Live Presentation EDT Time Zone
*C-24	Tanner Roberts, OMS-III	Rocky Vista University College of Osteopathic Medicine-Southern Utah	Clinical	Impact of OMM & OMT	Inter- and Intra-Observer Reproducibility of Student Researchers in Performing Shear Wave Elastography of the Lower Trapezius Muscle	12:30pm-12:50pm
**C-25	Austin Blake Benedict, OMS-II	Michigan State University College of Osteopathic Medicine	Clinical	Impact of OMM & OMT	Preliminary results from a randomized controlled trial on the efficacy of Osteopathic Manipulative Medicine in recovery from concussions	2:00pm-2:20pm
*C-26	Yibei Lun, OMS-II, PharmD	Charleston Area Medical Center	Clinical	Chronic Diseases & Conditions	Perioperative and Clinical Outcomes of Transcarotid Artery Revascularization: A Single-Center Experience	9:00am-9:20am
*C-27	Rachel Supinda Sinit, OMS-III	Western University of Health Sciences College of Osteopathic Medicine of the Pacific-Oregon	Clinical	Acute and Chronic Pain Management	Patient Perspectives on the Perceived Effectiveness, Ease of Use, and Satisfaction of Different Pain Rating Scales for People Living with Chronic Pain	4:00pm-4:20pm
*C-28	Marissa Viola, MS, OMS-IV	Lincoln Memorial University DeBusk College of Osteopathic Medicine	Clinical	Chronic Diseases & Conditions	Concurrent mutation in EGFR mutant non-small cell lung cancer may be associated with resistance to first and second generation EGFR tyrosine kinase inhibitors, a meta-analysis	9:30am-9:50am
*C-29	Nicole Companion, OMS-III	New York Institute of Technology	Clinical	Impact of OMM & OMT	Effects of Osteopathic Manipulative Treatment on Primary Dysmenorrhea	2:30pm-2:50pm
*C-30	Abigail Tzau, OMS-IV	Michigan State University College of Osteopathic Medicine (MSUCOM)	Clinical	Chronic Diseases & Conditions	A Collaborative Modeling Approach to Understand the Perspective of Patients with Low Back Pain Referred for Osteopathic Manipulative Medicine Management	10:00am-10:20am
*C-31	Westin Wong, OMS-III	Rocky Vista University College of Osteopathic Medicine-Southern Utah	Clinical	Musculoskeletal Injuries and Prevention	Educational Intervention Promotes Injury Prevention Adherence in Club Collegiate Men's Lacrosse Athletes	4:00pm-4:20pm
*C-32	Whitney Carroll, OMS-III	Marian University College of Osteopathic Medicine	Clinical	Health Disparities-Social Determinants of Health	Secondary characteristics of side effects experienced in pediatric hematology and oncology patients receiving the COVID-19 vaccine	4:30pm-4:50pm
*C-33	Mohammad Farhan Aktar, OMS-II	New York Institute of Technology	Clinical	Chronic Diseases & Conditions	Association between Ehlers-Danlos Syndrome, Mast Cell Diseases, and Syncope/ Presyncope at an Osteopathic Medical Center	10:30am-10:50am

All times listed are Eastern Daylight Savings Time

[Return to Top](#)



Research Poster Presentation Schedule

* = Student Poster Competition

♦ = AOA Funded Project

Poster Number	PI Name	Organization Name	Category	Research Topic	Project Title	Time of Live Presentation EDT Time Zone
*C-34	Gibrael A Barlaskar, OMS-I	Michigan State University College of Osteopathic Medicine	Clinical	Chronic Diseases & Conditions	Creative Approaches at Managing Chronic Insomnia	11:00am-11:20am
*C-35	Jessica Franke, OMS-III	Marian University College of Osteopathic Medicine	Clinical	Chronic Diseases & Conditions	Malnutrition Screening and Treatment in Pediatric Oncology: A systematic review	11:30am-11:50am
*C-36	Edward Lee, OMS-III	Western University of Health Sciences College of Osteopathic Medicine of the Pacific	Clinical	Impact of OMM & OMT	Augmentation of Immune Response to COVID-19 mRNA Vaccination Through Osteopathic Manipulative Treatment	3:00pm-3:20pm
*C-37	Joseph Jenkins, OMS-III	Rocky Vista University College of Osteopathic Medicine-Southern Utah	Clinical	Chronic Diseases & Conditions	Liver Normalized Local Variance and Liver/Kidney Ratio to Assess NAFLD: A Pictorial Essay	12:00pm-12:20pm
*C-38	Ankita Mishra, OMS-IV	Cape Fear Valley	Clinical	Health Disparities-Social Determinants of Health	Why Not Breastfeed? Identifying Barriers to Breastfeeding and the Effectiveness of Antenatal Breastfeeding Education in a Rural Hospital in Southeastern United States	Withdrawn from Poster Competition
C-39	Jenny Song, DO	Eastern Connecticut Health Network	Clinical	Chronic Diseases & Conditions	High folate level and vitamin B12 deficiency in neurological pathologies: knocking down the misdiagnosis barrier	No Live Presentation
*H-1	Evan Starr, OMS-III	Rocky Vista University College of Osteopathic Medicine-Colorado	Health Services	Osteopathic Philosophy	Utilization and Reimbursement Trends of Osteopathic Manipulative Treatment for Medicare Patients: 2000-2019	9:00am-9:20am
*H-2	Anna Dold, OMS-II	Arkansas College of Osteopathic Medicine	Health Services	Musculoskeletal Injuries and Prevention	Effect of Movement-Based Pelvic Health Intervention on Knowledge Acquisition and Exercise Adherence	2:00pm-2:20pm
*H-3	Steven Gawrys, Jr., OMS-III	Rocky Vista University College of Osteopathic Medicine-Colorado	Health Services	Health Disparities-Social Determinants of Health	Psychiatric CPT Code Trends in Medicare Patients: 2013-2020	9:30am-9:50am
*H-4	Sarah E Colando, OMS-IV	Edward Via College of Osteopathic Medicine-South Carolina	Health Services	Health Disparities-Social Determinants of Health	Evaluating the Utilization of Telemedicine in Obstetrics and Gynecology: A Survey of the Practitioner Perspective	10:00am-10:20am
*H-5	Kristina Fritz, OMS-IV	Nova Southeastern University Dr. Kiran C. Patel College of Osteopathic Medicine	Health Services	Chronic Diseases & Conditions	An Analysis of Opioid-Related Overdoses and Deaths in Florida to Assess the Need for Safe Injection Sites	2:30pm-2:50pm
*H-6	Laura Triana, OMS-II	Edward Via College of Osteopathic Medicine-Auburn	Health Services	Health Disparities-Social Determinants of Health	Education On Working with An Interpreter Increases Student Confidence	10:30am-10:50am

All times listed are Eastern Daylight Savings Time

[Return to Top](#)



Research Poster Presentation Schedule

* = Student Poster Competition

♦ = AOA Funded Project

Poster Number	PI Name	Organization Name	Category	Research Topic	Project Title	Time of Live Presentation EDT Time Zone
*H-7	Gabriel Ward MA, OMS-III	Edward Via College of Osteopathic Medicine-South Carolina	Health Services	Osteopathic Philosophy	Evaluation of Impact on Medical Students' Confidence to Give Patient-centered Nutrition Interventions - Pre and Post "Food and Nutrition as Medicine" Course (FANAM)	11:00am-11:20am
*H-8	Meaghan E Kuzmich, OMS-III	Lincoln Memorial University DeBusk College of Osteopathic Medicine	Health Services	Health Disparities-Social Determinants of Health	The Exploration of Dance Therapy as an Approach to Neurodegenerative Diseases in Rural Appalachian Communities with Limited Access to Care	11:30am-11:50am
*H-9	Mariah Hydzik, OMS-II	Campbell University-Jerry M. Wallace School of Osteopathic Medicine	Health Services	Health Disparities-Social Determinants of Health	Patient Attitudes and Perceived Barriers towards Mental Health Treatment Options in a Rural Clinic	12:00pm-12:20pm
*H-10	Ryan Schnautz, OMS-II	Ohio Health Doctors Hospital	Health Services	Impact of OMM & OMT	Reduction in Stress Among Frontline Healthcare Workers Receiving Osteopathic Manipulation	4:30pm-4:50pm
*PH-1	Nicole Newman, OMS-III	West Virginia School of Osteopathic Medicine	Public Health	Health Disparities-Social Determinants of Health	Student Developed Didactic Series Rooted in Osteopathic Philosophy	9:00am-9:20am
*PH-2	Amani Masoud, OMS-IV	New York Institute of Technology College of Osteopathic Medicine at Arkansas	Public Health	Health Disparities-Social Determinants of Health	The impact of Age, Race, Religion, and Gender on Patients' Comfort with Medical Physical Examinations	9:30am-9:50am
*PH-3	Michael Jacob Farber, BS, OMS-II	New York Institute of Technology	Public Health	Health Disparities-Social Determinants of Health	The Use of Health Policy to Overcome Colorectal Cancer-Related Health Disparities in the African American Community	10:00am-10:20am
*PH-4	Farhaad Rasool, OMS-II	New York Institute of Technology	Public Health	Health Disparities-Social Determinants of Health	Supervised Drug Injection Sites to Reduce Intravenous Drug Usage and Prevent Drug Overdose	10:30am-10:50am
*PH-5	Howard N Rainey, OMS-III	Edward Via College of Osteopathic Medicine-Virginia	Public Health	Health Disparities-Social Determinants of Health	Investigating SARS-CoV-2 Vaccine Hesitancy among Various Demographic Groups Employed at Long-Term Care Facilities in Southwest Virginia	11:00am-11:20am
*PH-6	Dominique Rehl, OMS-II	Ohio University Heritage College of Osteopathic Medicine	Public Health	Health Disparities-Social Determinants of Health	Online Virtual Reality Simulations to improve Health Professional Students Empathy and Attitudes Towards Opioid Use Disorder (OUD).	11:30am-11:50am

All times listed are Eastern Daylight Savings Time

[Return to Top](#)



Research Poster Presentation Schedule

* = Student Poster Competition

♦ = AOA Funded Project

Poster Number	PI Name	Organization Name	Category	Research Topic	Project Title	Time of Live Presentation EDT Time Zone
*PH-7	Ashley Lynn Orr, MS, OMS-III	Marian University College of Osteopathic Medicine	Public Health	Osteopathic Philosophy	Awareness of the osteopathic field and understanding of osteopathic philosophy improve after participation in a healthcare camp for high school students	4:00pm-4:20pm
*PH-8	Victoria Herr, OMS-III	New York Institute of Technology	Public Health	Osteopathic Philosophy	Gender Differences in Stress, Anxiety, and Depression Perceived by Osteopathic Medical Students Within the Context of the COVID-19 Pandemic	4:30pm-4:50pm
*PH-9	Jackie Hu, OMS-III	Western University of Health Sciences College of Osteopathic Medicine of the Pacific-Oregon	Public Health	Health Disparities-Social Determinants of Health	A Peer-led Program to Increase Diversity in Osteopathic Medical Schools: Three Year Update	12:00pm-12:20pm
*PH-10	Jeri Ann Ramilo, OMS-II	New York Institute of Technology	Public Health	Health Disparities-Social Determinants of Health	The Evolving Role of Private Equity in Healthcare	12:30pm-12:50pm
*PH-11	Bruce Liberi, OMS-III	Edward Via College of Osteopathic Medicine-Virginia	Public Health	Health Disparities-Social Determinants of Health	Investigating Differences in COVID-19 Outcomes in Southwest Virginia	2:00pm-2:20pm
*PH-12	Crystal Barroca, OMS-II	Nova Southeastern University Dr. Kiran C. Patel College of Osteopathic Medicine	Public Health	Health Disparities-Social Determinants of Health	Use of Neuraxial Anesthesia Administration in Childbirth to Reduce Racial Health Disparities in Maternal Mortality Rates	2:30pm-2:50pm
*PH-13	Christine Jisoo Lee, OMS-I	New York Institute of Technology	Public Health	Health Disparities-Social Determinants of Health	Motivations and Impact of Restrictive Abortion Laws in the United States	3:00pm-3:20pm
*PH-14	Christopher Rennie, OMS-II	Nova Southeastern University Dr. Kiran C. Patel College of Osteopathic Medicine	Public Health	Health Disparities-Social Determinants of Health	The Effect of Median Household Income on Annual Osteochondral Cancer Death Rates: A Study of 36 Florida Counties	3:30pm-3:50pm
*PH-15	Barbara Ibeth Prol, OMS-II	Nova Southeastern University Dr. Kiran C. Patel College of Osteopathic Medicine	Public Health	Health Disparities-Social Determinants of Health	The Relationship Between Maternal Education Level and Preterm Birth: A Study of All 67 Florida Counties In 2020	2:00pm-2:20pm
*PH-16	Lisa Millar, OMS-III	A.T. Still University Kirksville College of Osteopathic Medicine	Public Health	Health Disparities-Social Determinants of Health	Curricular Changes to Increase Quality of Healthcare for Individuals with Intellectual and Developmental Disabilities: Combating Health Disparities by Increasing Inclusion in Medical Education	2:30pm-2:50pm

All times listed are Eastern Daylight Savings Time

[Return to Top](#)



Research Poster Presentation Schedule

* = Student Poster Competition

♦ = AOA Funded Project

Poster Number	PI Name	Organization Name	Category	Research Topic	Project Title	Time of Live Presentation EDT Time Zone
*PH-17	Denisia Nesha Thomas, OMS-IV	Edward Via College of Osteopathic Medicine- Auburn	Public Health	Health Disparities-Social Determinants of Health	Underlying Pressures that Black Mothers and their Children Face: A Qualitative Assessment on the Effects of Racism/Discrimination and the COVID-19 Pandemic	3:00pm-3:20pm
*PH-18	Anjali Patel, OMS-IV	University of North Texas Health Science Center	Public Health	Health Disparities-Social Determinants of Health	Social Needs Assessments in Women of Reproductive Age	3:30pm-3:50pm
*PH-19	Brittany Rae Davis, OMS-IV	Edward Via College of Osteopathic Medicine- South Carolina	Public Health	Health Disparities-Social Determinants of Health	Effect of COVID-19 Pandemic on Domestic Violence Related Complaints Reported in the Clinical Setting using CREDO Recording System	4:00pm-4:20pm
PH-20	Danielle Lukish, DO	Ascension Saint Joseph Hospital	Public Health	Health Disparities-Social Determinants of Health	Impact of the COVID-19 Pandemic on Osteopathic Medical Students in the 2021-2022 NRMP Application Process	No Live Presentation

All times listed are Eastern Daylight Savings Time

[Return to Top](#)



ICOM
Idaho College of Osteopathic Medicine

THE FUTURE IS BRIGHT

Visit us at Booth 334

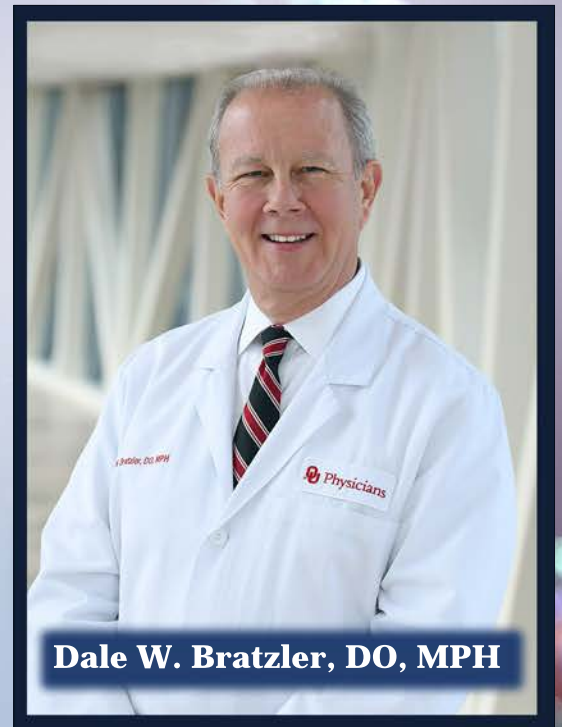
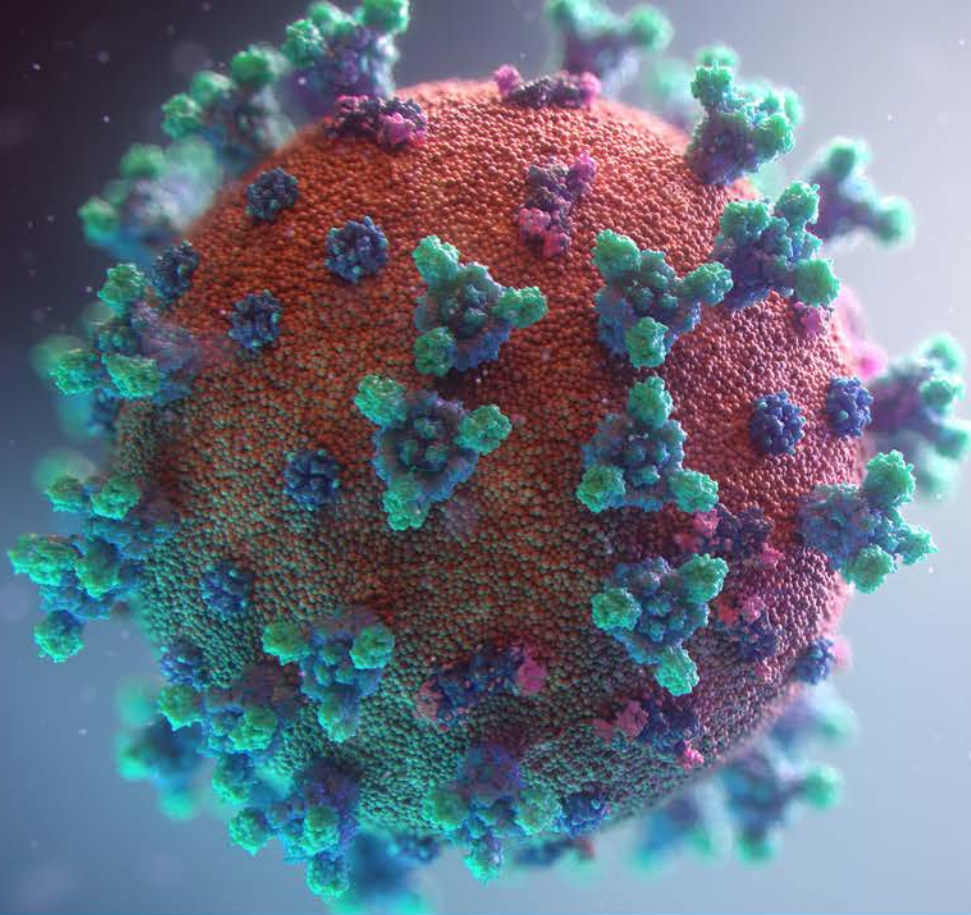
JOIN OUR TEAM!

- Make an impact on the Central Valley by serving the health care needs of our underserved and rural populations
- Develop curriculum with whole-person approach to treatment and care, utilizing cutting-edge technology and hands-on experiences
- Enjoy living in Central California's diverse community culture with over 70 distinct ethnic groups
- Find a family-friendly community with highly ranked educational institutions including, Clovis Unified School District



See current openings at
chsu.edu/careers

CHSU CALIFORNIA
HEALTH SCIENCES
UNIVERSITY
COLLEGE OF OSTEOPATHIC MEDICINE



Dale W. Bratzler, DO, MPH

Up-To-Date Insights on COVID-19 Treatment

Symposium will address:

- Review the epidemiology of COVID-19.
- Identify current antiviral treatments for COVID-19.
- List the groups of patients recommended to take oral antiviral treatments for COVID-19.
- Discuss the benefits and side-effects of taking antiviral medications for COVID-19.
- Recognize the considerations for use of antiviral medications in patients on other drugs and those with underlying health conditions.
- A look to the future - what does endemic COVID-19 look like?

Faculty: Dale W. Bratzler, DO, MPH
Chief COVID Officer - University of Oklahoma
Professor College of Medicine
Interim Dean, Hudson College of Public Health

Date: Saturday, October 29, 2022

Time: 6:00- 7:30 AM EDT

Location: Sheraton Grand Ballroom

Breakfast Provided by the AOA

This symposium is supported by a medical education grant from Pfizer Inc.

The Interconnected Cardio-Renal Metabolic (CRM) Systems
Thursday, October 27 | 12:00pm-1:30pm
Sheraton Grand Ballroom

Learn more about the relationship between the renal, cardiovascular, and metabolic systems and the impact that comorbidities in these interconnected systems can have on patients. The presentation will discuss the shared risk factors that contribute to the development and progression of clinically comorbid conditions and explore the cardio-renal-metabolic (CRM) map and address challenges that patients and healthcare providers face in managing concurrent conditions of the CRM systems. Additionally, it will highlight the importance of a collaborative approach to care for patients.

Lunch will be provided.

This educational session is brought to you by Boehringer-Ingelheim and Lilly Inc.



Faculty: Javier Morales, MD
Vice President, Advanced Internal Medicine Group
East Hills, New York



All times listed are Eastern Daylight Savings Time

[Return to Top](#)

**Linking Chronic Kidney Disease (CKD) and Diabetes:
Relationship, Challenges, and Burden of Disease
Friday, October 28 | 6:00am-7:30am
Sheraton Grand Ballroom**

Learn more about the relationship between chronic kidney disease (CKD) and diabetes, and the impact of these comorbidities on patients. This presentation will review the definition, clinical characteristics, and epidemiology of CKD. It will explore the implications of diabetes as a coexisting morbidity and discuss challenges that patients and healthcare providers face in managing these concurrent conditions. Additionally, it will highlight the importance of a collaborative approach to care for patients with CKD and diabetes.

Breakfast will be provided.

This educational session is brought to you by Boehringer-Ingelheim.



Faculty: Robert Chilton, MD
Professor of Medicine
Director Cath Lab & Clinical Proteomics
Associate Program Director of Interventional Cardiology
University of Texas Health Science Center
San Antonio, Texas



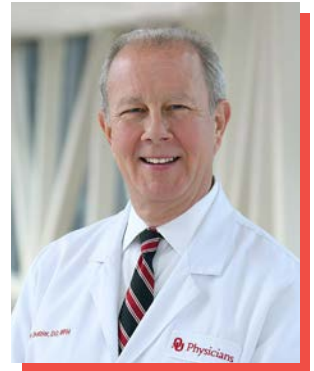
All times listed are Eastern Daylight Savings Time

[Return to Top](#)

Up-To-Date Insights on COVID-19 Treatment
Saturday, October 29 | 6:00am-7:30am
Sheraton Grand Ballroom

CME Credit: 1.5

The symposium will address effective and safe treatments for patients with positive results of direct SARS-CoV-2 viral testing having mild to moderate COVID-19 symptoms and who are at high risk for progression to severe COVID-19 producing systemic complications, including hospitalization or death. Following the symposium, participants will be able to identify current antiviral treatments for COVID-19; list the groups of patients recommended to take COVID-19 oral antiviral treatments upon contraction; discuss the benefits and side effects of taking antiviral medications to treat COVID-19; identify contraindicated medications and premorbid co-medication intake alterations for use with COVID-19 antiviral medications, and access educational resource sites where drug interactions can easily be determined; and effectively discuss with patients the benefits of and safe use of antiviral medications to treat COVID-19.



Breakfast provided by the American Osteopathic Association.

This educational session is supported by an independent medical education grant from Pfizer Inc.



Faculty: Dale W. Bratzler, DO, MPH

Professor, Department of Internal Medicine, College of Medicine at the University of Oklahoma (OU)
Health Sciences Center
Chief COVID Officer
Enterprise Chief Quality Officer
Interim Dean of the Hudson College of Public Health
Edith Kinney Gaylord Presidential Professor

All times listed are Eastern Daylight Savings Time

[Return to Top](#)

During the lunch hour, participate in a Product Theater.

Enhancing CRC Screening: The Power of Choice and Shared Decision-Making
Friday, October 28 | 12:10pm-12:55pm

David M. Poppers, MD, Gastroenterologist

Affiliation(s): Clinical Professor of Medicine at the NYU Grossman School of Medicine. Director of GI Quality and Strategic Initiatives at the NYU Preston Robert Tisch Center for Men's Health, and Joan Tisch Center for Women's Health at NYU Langone Health in New York. He serves on national committees for the American Society for GI Endoscopy (ASGE).

There is an unmet need in CRC screening that needs to be addressed. Giving patients choices and participating in a shared decision-making process is important to enhance CRC screening, and Cologuard® is one of the options.

Brought to you by:

**EXACT
SCIENCES**

Neuronal Influence on Vasomotor Symptoms Associated with Menopause (VMS)
Saturday, October 29 | 12:10pm-12:55pm

Teresa A. Hubka, DO

Dr. Teresa Hubka is the Owner, Founder, and Medical Director of Comprehensive Wellness Care, a practice of affiliates in Obstetrics and Gynecology, Osteopathic Medicine, Fertility and Family Care, Behavioral Health, Nutrition and Fitness, who specialize in providing complete health services to women of all ages.

In this session, we will discuss an overview of vasomotor symptoms associated with menopause, the hypothalamus and VMS, the impact of VMS, and prioritizing VMS.

Brought to you by:

 **astellas**



All times listed are Eastern Daylight Savings Time

[Return to Top](#)

Want to learn more about an innovative topic? Attend a Product Forum.

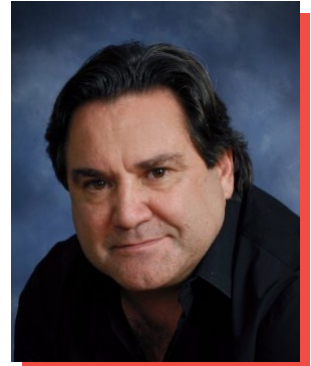
Chronic Care: Management, Compliance, Revenue
Saturday, October 29 | 9:30am-10:00am

Robert "Bob" Baker, Chairman and CEO, 24OurCare

Chairman, Robert E. "Bob" Baker, MPH, has been a leader in health care development and executive management for more than 30 years. Baker is a native Tulsan and proud member of the Cherokee Nation. His experience is vast and includes operating and developing acute care hospitals, specialty hospitals, rehabilitation hospitals, ambulatory care facilities, medical office buildings, clinics, diagnostic centers, and now Chronic Care, Population Health and Care Management for Medicare Part B patients nationwide.

Patient Engagement and Keep Your Practice Compliant while Increasing Revenue. See what 24OurCare has to offer: Value Based Care with 16 billable codes.

Brought to you by:



Multi-Cancer Early Detection (MCED): Framing the Future of Cancer Screening
Saturday, October 29 | 12:15pm-12:45pm

Maria Abunto, MD, MPH

Regional Medical Science Liaison Leader at Exact Sciences with over 20 years of clinical research experience. She received her Doctor of Medicine at the University of the East and served as a Family Medicine Medical Director. Dr. Abunto completed her Master of Public Health from the University of Pittsburgh Graduate School of Public Health. She assumed a position as an Epidemiologist at the National Institutes of Health, conducting colorectal cancer research with the National Cancer Institute.

Brought to you by:



All times listed are Eastern Daylight Savings Time

[Return to Top](#)



A.T. Still fit for life
FUNRUN 2022
 Advocates for the American Osteopathic Association

October 30, 6:30-7:45 a.m.

**Join the Advocates for the American Osteopathic Association at the
 A.T. Still Fit for Life Fun Run – back in person this year at OMED!**

100% of the profits from this fundraising event support the osteopathic community
 in the form of SOMA scholarships and special projects across the country.

REGISTER HERE!

Registration open through October 29.



**DEDICATED TO PROVIDING HEALTHCARE TO
 UNDER-SERVED COMMUNITIES AROUND THE WORLD.**

Members are the life blood of DOCARE. Benefits include:

- Short-term global health outreach trip opportunities
- International clinical rotations (medical students and residents)
- Support for clinic development and trip directors
- Global Health Certificate Program
- Travel grants & scholarships
- Special events, webinars, & educational seminars

DOCARE members: join the virtual Annual Membership Meeting on Sat., Oct. 29 at 3 pm EDT.



BECOME A MEMBER

<https://docareintl.org/become-a-member/>

Exhibits

Exhibits will take place in-person at the Convention Center in Hall C-D. Virtual participants can view the list of in-person exhibitors.

EXHIBIT HOURS

Friday, October 28 – 9:15am-3:00pm

Saturday, October 29 – 9:00am-3:00pm

OMED Central:

Visit OMED Central in the back of the Exhibit Hall to learn more about AOA services. Drop off your raffle ticket for a chance to win FREE OMED 2023 registration, AOA Swag and stay tuned for other exciting items. Stop by on Saturday from 11am-2pm to experience the Cuddle Station, brought to you by the AAOA.

View the List of Exhibitors Online



Propel Your Practice

Order AOA-branded merchandise, coding books and brochures.

#DOProud

store.osteopathic.org



All times listed are Eastern Daylight Savings Time

[Return to Top](#)

OMED22

Register for OMED Today! | Page 96



U.S. ARMY



MAKE A DIFFERENCE ON THE U.S. ARMY HEALTH CARE TEAM.

As a physician on the U.S. Army or Army Reserve health care team, you'll create and implement treatments of osteopathic techniques to diagnose and treat Soldiers and their family members. You'll distinguish yourself as a leader in your specialty while working at one of our state-of-the-art facilities. And, if you choose the Army Reserve, you can continue to practice in your community and serve when needed. Whichever you choose, you will play an important role in the treatment and care of our nation's heroes.

Learn more

Sponsor Acknowledgement

Thank you to the sponsors for their support of the OMED 2022 conference.

Platinum Sponsors



Gold Sponsor



Silver Sponsors



[Return to Top](#)

Insulin Simulator

Demystifying How Insulin Impacts Glucose Control in Real Time

[Click here for more information](#)



The newly developed Insulin Simulator is an online interactive tool that lets healthcare professionals (HCPs) create and evaluate a variety of insulin regimens for a diverse set of hypothetical patients with varied characteristics. The Insulin Simulator is designed to help HCPs understand the impact of different insulin doses and types on blood glucose values.

Dr. Diana Isaacs will provide an in-person demonstration of the Insulin Simulator.

- Apply various insulin treatments to help manage glycemic control in hypothetical patients, including adjustments to carbohydrate content and physical activity levels
- Review the time action profiles of different insulins and their impact on blood glucose
- Recognize how changes to insulin regimen and lifestyle impact blood glucose, including CGM metrics, TIR, and HbA1c

Diana Isaacs, PharmD, BCPS,
BC-ADM, BCACP, CDCES, FADCES, FCCP



Endocrine Clinical Pharmacist and Remote Monitoring Program Coordinator at the Cleveland Clinic

- Holds board certifications in pharmacotherapy, ambulatory care, and advanced diabetes management
- Serves on the Professional Practice Committee of the American Diabetes Association, as well as the National Board for the Association of Diabetes Care & Education Specialists (ADCES)
- Is an ADCES and American College of Clinical Pharmacy fellow
- Advocates for access to the latest technologies and therapeutics for all people with diabetes and speaks on diabetes-related topics nationally and internationally

OMED 2022

join us in Boston!



OMED Convention Booth 433 | October 28 – 29, 2022 | Hynes Convention Center

Alumni Reception

October 29, 2022 | Come and Go | 6:30 – 8:30 p.m.
King's Dining and Entertainment
50 Dalton St. (walking distance from Convention Center)

Join the OSU-COM Alumni Association for an evening of fun, food, drinks and bowling.

For more information:

medicine.okstate.edu/alumni/omed-reception.html

Please RSVP to the Alumni Reception at okla.st/omed-2022 or scan QR code.



MEDICINE



AMERICAN
OSTEOPATHIC ASSOCIATION

Our thriving and diverse community is stronger when we can stand and face the future together.

Join or renew today to get access to:

- **CME tracking** and **self-reporting**
- Discounted **live** and **online CME activities**
- **Access to the latest research**
- **FREE Physician Profile report**
- Patient recruitment through **“Find Your DO”**



Visit our Membership Booth at OMED Central to learn more about AOA Member Benefits and to enter a raffle to earn a free year of AOA membership!

Networking Events

Thursday, October 27 | 6:00pm-8:00pm

OMED Welcome Reception **Sheraton Boston | Grand Ballroom**

Network with your colleagues and enjoy light bites to celebrate the kickoff of OMED. Be sure to add the welcome reception to your registration.

Thursday, October 27 | 8:00pm-10:00pm

American Osteopathic Foundation **LGBTQ+ Health Equity and Inclusion Initiative Karaoke Party**

Warm up your vocal cords, brush up on your favorite songs, and join the AOF for a Karaoke Party! Members of the LGBTQ+ communities and allies are welcome to join in an evening of camaraderie and loads of entertainment! Beer and wine provided.



**Location: Kings Dining & Entertainment,
50 Dalton Street – an easy walk from
the Sheraton.**

\$25 at the door for admission into the Karaoke bar and two drink tickets. Space is limited. The ability to carry a tune is not required.

Donations to support the AOF LGBTQ+ Health Equity and Inclusion Initiative are appreciated but not required.

All times listed are Eastern Daylight Savings Time

[Return to Top](#)

Networking Events

Saturday, October 29 | 2:00pm-3:00pm

Halloween on the Exhibit Floor
Hynes Convention Center | Hall D

Enjoy this family friendly activity come visit the exhibit hall, interact with exhibitors, and have some Halloween fun along the way (costumes optional).

Saturday, October 29 | 5:00pm-6:00pm

Open Mic Networking Event
Hynes Convention Center | Boylston Foyer, 3rd Floor

Wrap up a day of education with an informal networking event featuring acts from your talented DO community as well as the sounds of dueling pianos.

All times listed are Eastern Daylight Savings Time

[Return to Top](#)



**PCOM extends our
congratulations to our alumnus**

ERNEST R. GELB
PCOM CLASS OF 1978

**on his recent appointment
as President of the
American Osteopathic Association**



Founded in 1899, Philadelphia College of Osteopathic Medicine is one of the nation's premiere osteopathic medical schools. PCOM has a robust research division that focuses on a myriad of disorders from neurodegenerative disease to cardiovascular disease to behavioral disorders.

For information about our locations and academic offerings, visit pcom.edu.

4190 CITY AVENUE PHILADELPHIA PA 19131 •     



**Western
University**
OF HEALTH SCIENCES

College of Osteopathic
Medicine of the Pacific

**Western University of Health
Sciences and The College of
Osteopathic Medicine of the
Pacific are proud sponsors of
this year's OMED conference**

**You are invited to a COMP alumni reception
on Saturday, October 29, 2022
at the Sheraton Boston in the Berkley room
from 6:30-8:30pm.**

Western University of Health Sciences
309 E. Second Street, Pomona, California 91766
www.westernu.edu



Alumni Events

A.T. Still University

A.T. Still University Networking Reception

Saturday, October 29

6:30pm-8:30pm

Sheraton Constitution Ballroom A

Des Moines University

DMU Alumni Reception

Saturday, October 29

7:00pm-9:00pm

Rochambeau, 900 Boylston Street

Kansas City University

KCU Alumni Reception

Saturday, October 29

6:30pm-8:00pm

Sheraton Back Bay Ballroom D

Lincoln Memorial University-DeBusk College of Osteopathic Medicine

LMU-DCOM Alumni and Friends Event

Saturday, October 29

6:30pm-8:30pm

Grill 23 & Bar, 161 Berkeley Street

Midwestern University CCOM/AZCOM

Midwestern University CCOM/AZCOM Alumni Reception

Saturday, October 29

6:30pm-8:30pm

Sheraton Constitution Ballroom B

Michigan State University College of Osteopathic Medicine

Michigan State University College of Osteopathic Medicine Alumni Reception

Saturday, October 29

6:30pm-8:30pm

Sheraton Fairfax

New York Institute of Technology College of Osteopathic Medicine

NYITCOM Alumni Breakfast

Friday, October 28

7:00am-10:30am

Sheraton Constitution Ballroom A

New York Institute of Technology College of Osteopathic Medicine

NYITCOM Alumni Reception

Saturday, October 29

6:30pm-8:30pm

City Bar - Lenox Hotel, 65 Exeter Street

Oklahoma State University College of Osteopathic Medicine

OSU Alumni Reception

Saturday, October 29

6:30pm-8:30pm

Kings Dining and Entertainment, 50 Dalton Street

Pacific Northwest University of Health Sciences – College of Osteopathic Medicine

PNWU-COM Alumni Reception

Saturday, October 29

6:30pm-8:30pm

Clerys Bistro, 113 Dartmouth Street

Rocky Vista University

RVUCOM Alumni Reception

Saturday, October 29

6:30pm-8:30pm

Sheraton Back Bay Ballroom B

Rowan University School of Osteopathic Medicine

RowanSOM Alumni Reception

Saturday, October 29

6:30pm-8:30pm

Sheraton Liberty BC

All times listed are Eastern Daylight Savings Time

[Return to Top](#)

Alumni Events

Touro University

Touro University Alumni Brunch Reception

Friday, October 28

9:30am-11:30am

Sheraton Constitution Ballroom B

University of Pikeville – Kentucky College of Osteopathic Medicine

UP-KYCOM Alumni Reception

Saturday, October 29

6:30pm-8:00pm

Sheraton Back Bay Ballroom B

West Virginia School of Osteopathic Medicine

Cheers to 50 Years Alumni Reception

Saturday, October 29

5:30pm-7:30pm

The Hampshire House, 84 Beacon St

Western University of Health Sciences and the College of Osteopathic Medicine

COMP Alumni Reception

Saturday, October 29

6:30pm-8:30pm

Sheraton Berkley Room

A New Voice for The DO: *Yours*

The profession's **#1** source for news about osteopathic medicine has an updated look, a redesigned format and a fresh new perspective.

- Content written by DO physicians & students for DO physicians & students
- Guidance from a DO Editor-in-Chief and 25-member editorial advisory board
- More than 20 DO- & student-produced columns on timely medical topics
- Perspectives from a broad range of specialties, career stages and practice types

■ Visit The DO at www.thedo.osteopathic.org

Voices



Vania Manipod, DO
Editor in Chief



Alexis Cates, DO



Jane Datinguino,
OMS III, DO



Alexander Ford,
DO, RD



Wes Jones, DO



Jerry Balentine, DO



Seger Morris, DO



Joan Naldorf, DO



Hala Sabry, DO



Kelsea Sandefur, DO



Kevin Seely, OMS II



Alex Sher, OMS II



Daniel J. Waters, DO, MA



Samuel Zarbock, OMS V

**+ more
to come!**



AMERICAN
OSTEOPATHIC ASSOCIATION

All times listed are Eastern Daylight Savings Time

[Return to Top](#)



UNE COM

New England's Osteopathic Medical School

Visit us at OMED

Booth #425



ALUMNI AND FRIENDS RECEPTION

Saturday, October 29, 2022, at 6 p.m.

The Lenox Hotel - City Table



**UNIVERSITY OF
NEW ENGLAND**

INNOVATION FOR A HEALTHIER PLANET

Ancillary Meetings

Advocates for the American Osteopathic Association

President: Shane Halvorsen

Convention Chair: Megan Maples

Program at a Glance

The Advocates for the American Osteopathic Association will present a variety of social and educational events for OMED attendees, spouses, family, friends, and Advocates members. The A.T. Still Fit for Life Fun Run is back in person this year providing an opportunity to race in the historical Boston Common, the oldest public park in America. The Advocates will also host a family fun event, annual House of Delegates meeting, Advocates presidential installation and reception, and a workshop for SAA and IRAA members.

Friday, October 28 | 2:30pm

(meet at 1:45 pm at Black Bay Fire Station)

Advocates for the AOA Family Fun Event Fenway Park Tour

Revel in the history of one of America's most beloved stadiums with this 1-hour guided tour. Learn about the celebrated history of this 100+ year old stadium and its famous team, the Red Sox, and even sit atop the world-famous left-field wall, the Green Monster.

Free for OMED participants, spouses, families, and friends.

Learn more and register [here](#).



Saturday, October 29 | 9:00am-12:00pm

AAOA House of Delegates Meeting Sheraton Boston, Constitution Ballroom B

Pre-registration required by 10/27; AAOA membership required to vote

Learn more and register [here](#).



Saturday, October 29 | 3:00pm

Board Installation and Reception Sheraton Boston, Constitution Ballroom B

Reception honoring incoming AAOA President, Lori Hildebrand
Complimentary tapas and drinks, open to all; no registration required

All times listed are Eastern Daylight Savings Time

[Return to Top](#)

Ancillary Meetings

Advocates for the American Osteopathic Association

Sunday, October 30 | 6:30am-7:45 am

A.T. Still Fit for Life Fun Run

Boston Common, 139 Tremont St., Boston, MA



Back in person this year at OMED, the Fun Run is an annual tradition. Join us in promoting healthy living and enjoy racing through the historical Boston Common. T-shirts and race packets are available for pick-up at the Advocates Fun Run booth located just outside the exhibit hall at the Hynes Convention Center. All proceeds benefit the osteopathic community through SOMA scholarships and special projects grants.

Learn more and register [here](#).

Sunday, October 30 | 9:00am-12:00pm

SAA Workshop

Sheraton Boston, Republic Ballroom B

“How to Not Lose You”

Open to SAA & IRAA members. **Register [here](#).**

All times listed are Eastern Daylight Savings Time

[Return to Top](#)



AMERICAN
OSTEOPATHIC ASSOCIATION

Meet the My AOA Mobile App!

Your daily connection to the latest news
and resources in the field of osteopathic medicine

Navigation Key Features

News Feed - read, like and share the AOA's latest news, announcements and tweets.

My AOA - view CME reports, check AOA Board Certification expirations, and update information on your AOA record.

Discussions - post questions and respond to others in the community.

Messages - send direct or group messages to other My AOA App Users.

"More" - earn CME, view Events, learn about Advocacy, read the JOM, and more.

NEW



Visit our Membership Booth at **OMED** Central to learn more about the app and to enter a raffle to earn a free year of AOA membership!

Now Available for Free Download

Search for "My AOA" app in either the Apple App Store or the Google Play App Store from your mobile device. Use your same Osteopathic.org username and password credentials to login.





Touro University California (TUC) College of Osteopathic Medicine, located on historic Mare Island in the heart of the San Francisco Bay Area, is accepting applications for the Associate Dean of Clinical Education and Chair of Primary Care Department. This is an exciting opportunity to join a strong, innovative, mission-centric, and student-focused college in a progressive, award winning, and growing college of osteopathic medicine in the beautiful wine country of California.

Associate Dean of Clinical Education

We are seeking a dynamic and experienced leader in osteopathic clinical medical education, administration, and leadership. The Associate Dean must demonstrate the ability to work collaboratively to manage and enhance clinical curricular development, clinical research, DEI, clinical student advancement, clinical site development, department staff development, and clinical faculty development. This position will focus on sustaining and advancing the Clinical Education Department's role in clinical education, integration of clinical concepts into the preclinical years, and preparing our students for residency. The individual in this role will nurture relationships with all clinical training sites and partners, clinical faculty, and other departments in the COM and University as a whole.

Apply here: <https://apptrkr.com/3574636>

Chair of Primary Care Department

We are seeking an experienced leader in osteopathic medical education, primary care, administration, and leadership. The chair must demonstrate the ability to manage and enhance curricular development, research, DEI, student advancement, and faculty development. This position will focus on sustaining and developing the Primary Care Department's role in preclinical education and preparing our students for their growth into the clinical years of training. The individual in this role will nurture relationships with all other departments in the COM and University as a whole. This position will also be responsible for the direction of our student Primary Care Fellowship Program and early clinical experience curricular activities. This position takes a leadership role, participation, oversight, and implementation of PCD faculty clinical practice schedules.

Apply here: <https://apptrkr.com/3573168>

Review of applications will begin immediately and will continue until the position is filled. Our goal is to fill this position with an excellent candidate to begin the new calendar year in January 2023. Underrepresented minorities are encouraged to apply.



AMERICAN
OSTEOPATHIC ASSOCIATION

Save the Date DO Day

2023 Dates:

Saturday, April 15 – Sunday, April 16:

DO Day Virtual Program

Wednesday, April 19 – Thursday, April 20:

DO Day In-Person Congressional Meetings

Location: Mayflower DC



Ancillary Meetings

American College of Osteopathic Obstetricians and Gynecologists (ACOOG)

Day	Time	Title	Location	Room
10/28/2022	5:00pm-6:00pm	Women's Health Symposium	Sheraton	Republic
10/29/2022	5:30pm-7:00pm	ACOOG Reception/Residents Fair	Sheraton	Republic

American Osteopathic Academy of Addiction Medicine (AOAAM)

Day	Time	Title	Location	Room
10/28/2022	6:00am-7:00am	Caduceus Meeting	Sheraton	Conference Room
10/29/2022	6:00am-7:00am	Caduceus Meeting	Sheraton	Conference Room
10/30/2022	6:00am-7:00am	Caduceus Meeting	Sheraton	Conference Room

American College of Osteopathic Family Physicians (ACOFP)

Day	Time	Title	Location	Room
10/27/2022	8:00pm-9:30pm	ACOFP Foundation Reception	Sheraton	Constitution A
10/28/2022	7:00am-6:00pm	ACOFP Board Meeting	Sheraton	Fairfax
10/29/2022	9:30am-10:30am	ACOFP Conclave of Fellows Semi-Annual Business Meeting	Sheraton	Constitution A
10/30/2022	8:00am-12:00pm	ACOFP Foundation Board Meeting	Sheraton	Fairfax

All times listed are Eastern Daylight Savings Time

[Return to Top](#)

Ancillary Meetings

American College of Osteopathic Neurologists and Psychologists (ACONP)

Day	Time	Title	Location	Room
10/29/2022	6:00pm-7:00pm	ACONP Conclave of Fellows	Sheraton	Liberty A
	6:30pm-8:30pm	ACONP Awards Banquet	Sheraton	Back Bay A

American Association of Colleges of Osteopathic Medicine (AACOM)

Day	Time	Title	Location	Room
10/26/2022	8:00am-4:00pm	AACOM Council of Osteopathic Student Government Presidents (COSGP) Executive Board Meeting	Sheraton	Hampton
10/27/2022	8:00am-5:00pm	AACOM Council of Osteopathic Student Government Presidents (COSGP) Meeting	Sheraton	Back Bay B-C
	9:00am-4:00pm	AACOM Council on Student Affairs (CSA) Meeting	Sheraton	Back Bay A
10/28/2022	9:00am-5:00pm	AACOM Council of Osteopathic Student Government Presidents (COSGP) Meeting	Sheraton	Back Bay B-C
	9:00am-5:00pm	AACOM Council of Osteopathic Medical Admissions Officers (COMAO) Meeting	Sheraton	Back Bay A
	2:00pm-4:00pm	AACOM Marketing and Communications Advisory Council (MAC) Meeting	Sheraton	Back Bay D
10/29/2022	9:15am-5:15pm	AACOM Council of Osteopathic Student Government Presidents (COSGP) Meeting	Sheraton	Back Bay B-C
	1:00pm-5:00pm	AACOM Development and Alumni Relations Professionals (Dev-Alum) Meeting	Sheraton	Hampton

All times listed are Eastern Daylight Savings Time

[Return to Top](#)

Ancillary Meetings

DOCARE

Day	Time	Title	Location	Room
10/29/2022	9:00am-1:00pm	DOCARE Board Meeting (Closed Session)	Sheraton	Berkeley Room
	3:00pm-4:30pm	DOCARE Annual Member Meeting (DOCARE Membership Required to Vote) <u>Register here.</u>	Sheraton	Berkeley Room

Student Osteopathic Medical Association (SOMA)

Day	Time	Title	Location	Room
10/28/2022	9:00am-1:30pm	SOMA National Leader and Chapter Leader Meetings	Hynes	208
	1:30pm-5:00pm	SOMA House of Delegates (Closed Session/Invite Only)	Hynes	Hall B
10/30/2022	12:00pm-2:15pm	SOMA National Leader Elections (Closed Session/Invite Only)	Hynes	Hall B
	2:15pm-3:45pm	SOMA National Leader Meetings	Hynes	204 and 206

All times listed are Eastern Daylight Savings Time

[Return to Top](#)



GROW WITH US

The Rowan-Virtua School of Osteopathic Medicine continues to expand in southern New Jersey, with a second academic and clinical campus now open and a new clinical campus slated to open in early 2024.

OMED Conference Recruitment Reception Saturday, October 29, 4:30 PM, Eataly Boston

RSVP: gutchigian@rowan.edu

Your future could include:

- One-third of scheduled clinical hours teaching clinical skills or leading small groups of students in case-based learning sessions.
- Generous benefit package includes tuition waivers for dependents, spouse and domestic partners.
- Research opportunities at a Carnegie classified R2 public research institution.

Find Out More:

**Osteopathic
Medical Education
Conference Booth
#223**

Visit the Rowan Medicine jobs page to see all our opportunities.

[rowanmedicine.com/
physicians/opportunities/](https://rowanmedicine.com/physicians/opportunities/)



**ROWAN-VIRTUA
School of
Osteopathic Medicine**



Save the Date

OMED[®]2023

Oct. 6-8 | Orlando, FL | Hybrid

WDW Dolphin/Swan Hotel

omed.osteopathic.org



AMERICAN
OSTEOPATHIC ASSOCIATION

COMED[®]22

#DOProud Experience the Distinction

Oct. 27-30 | Boston, MA | Hybrid



A M E R I C A N
O S T E O P A T H I C
A S S O C I A T I O N